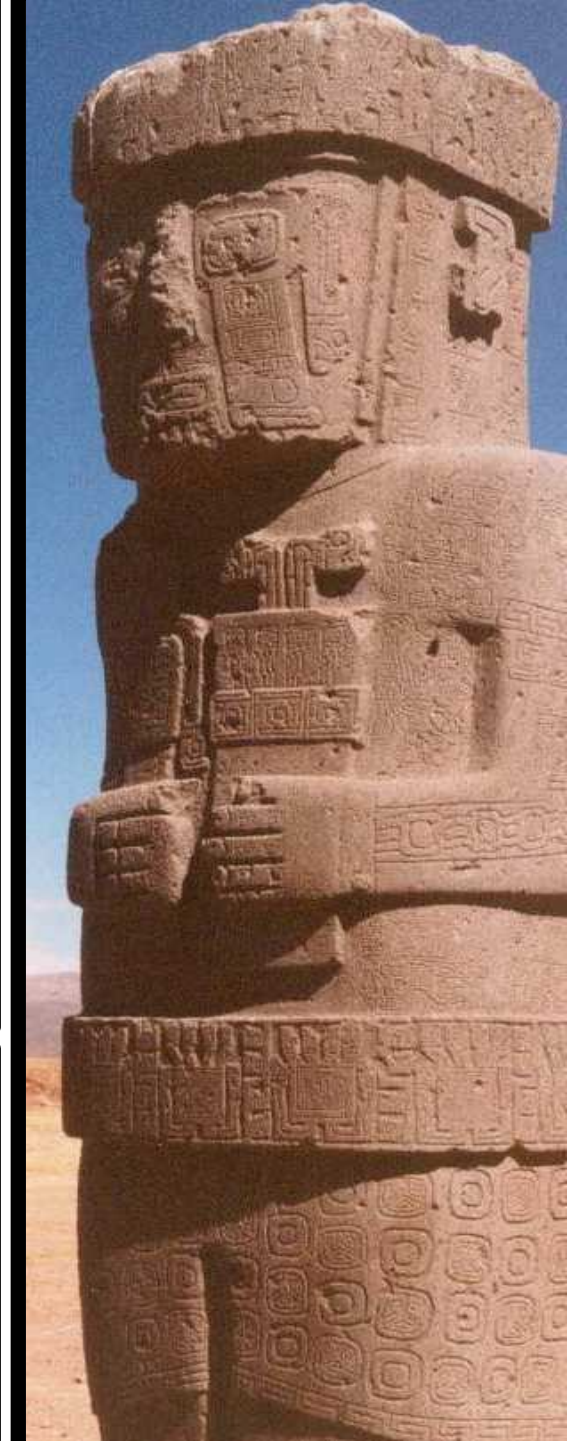
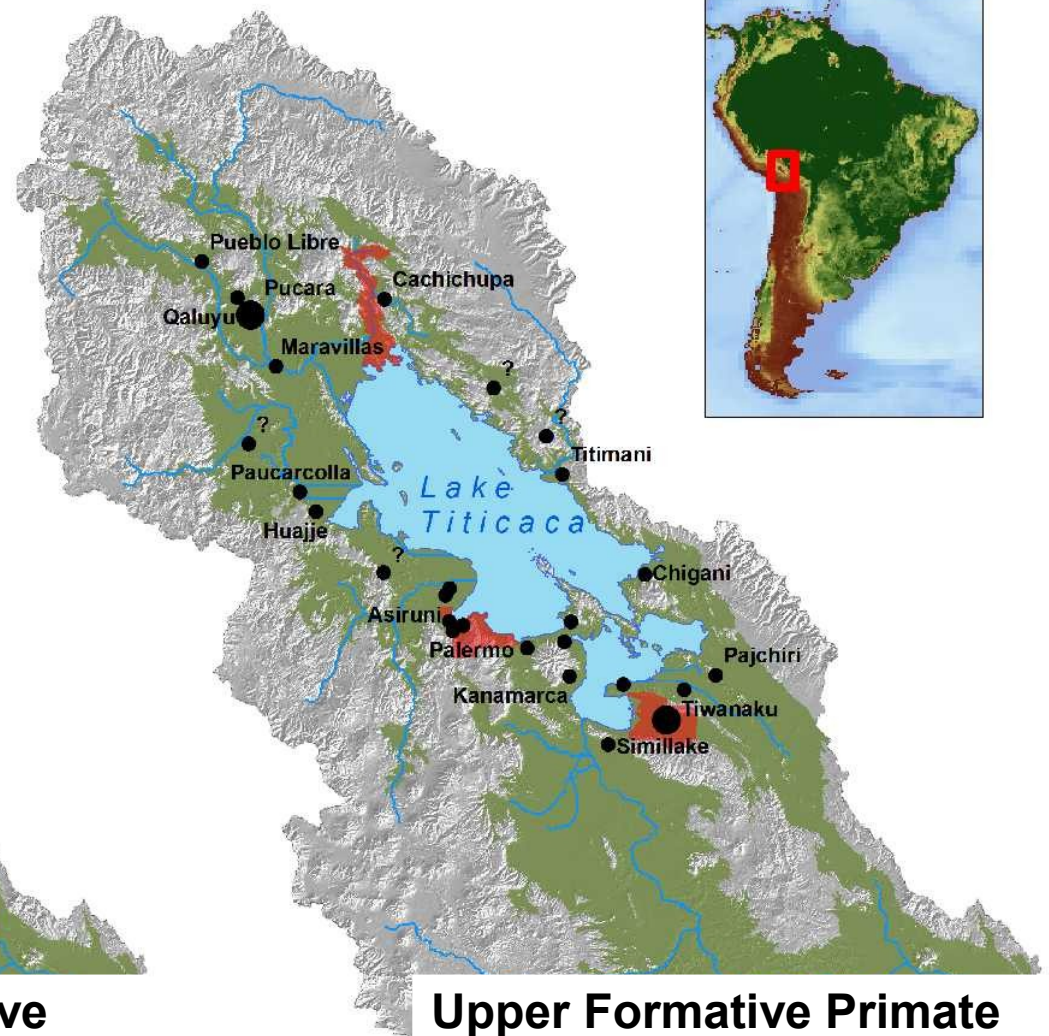
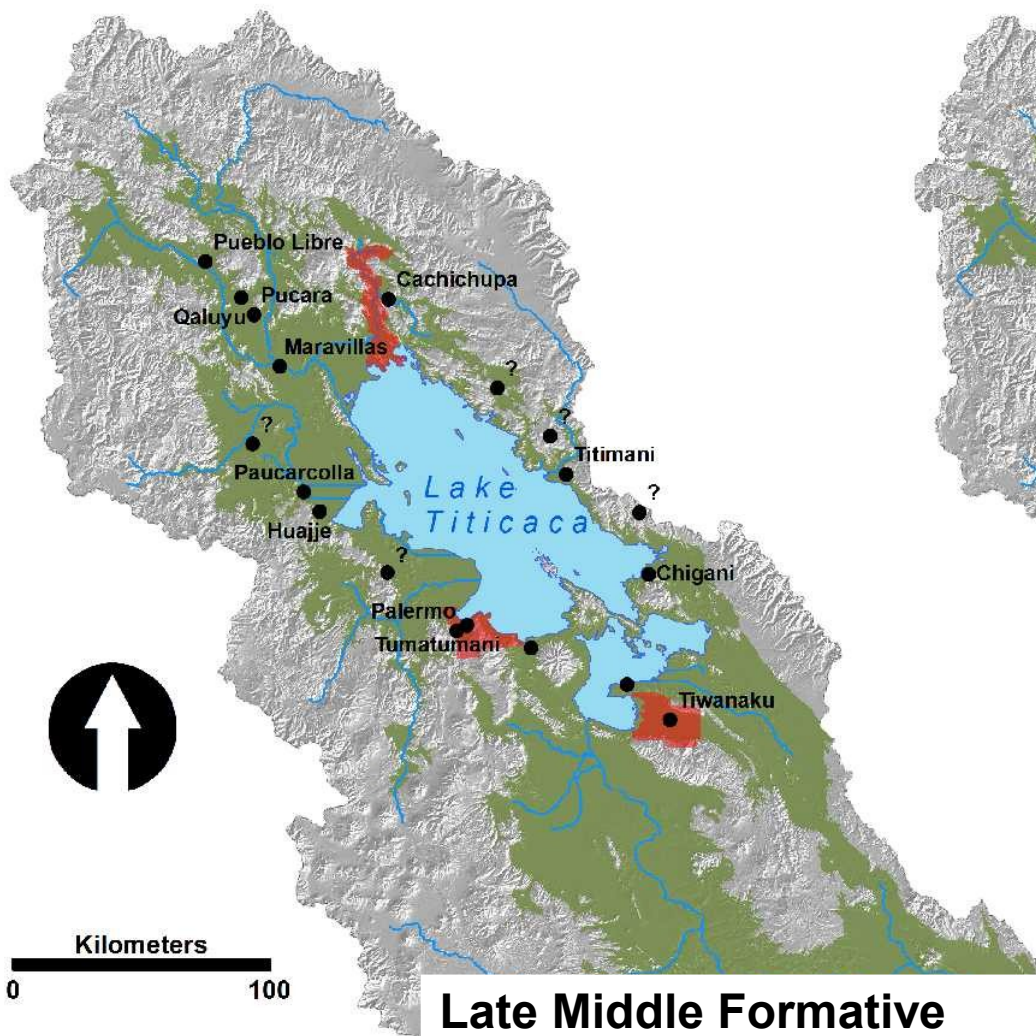


Towards an Economic Geography of State Emergence

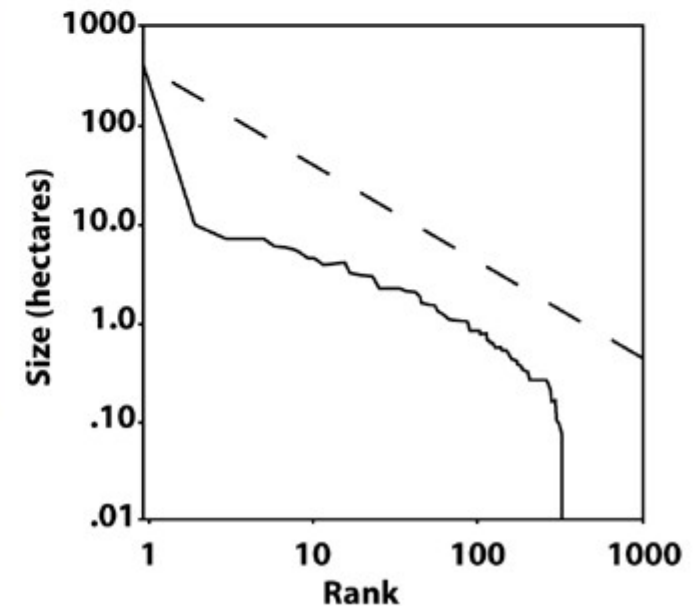
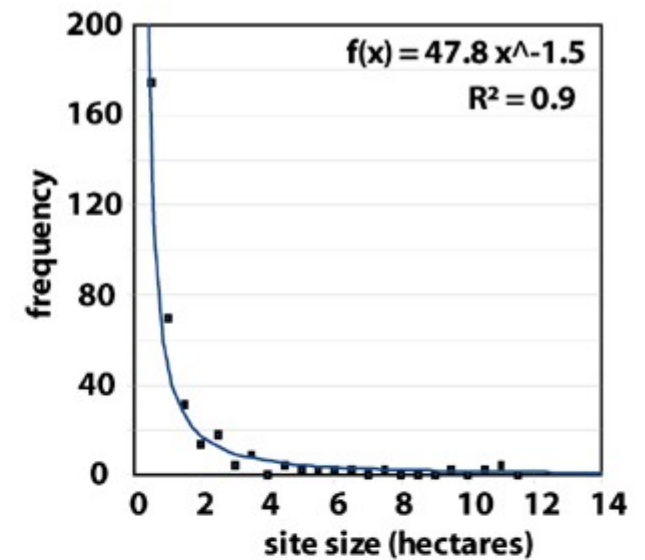
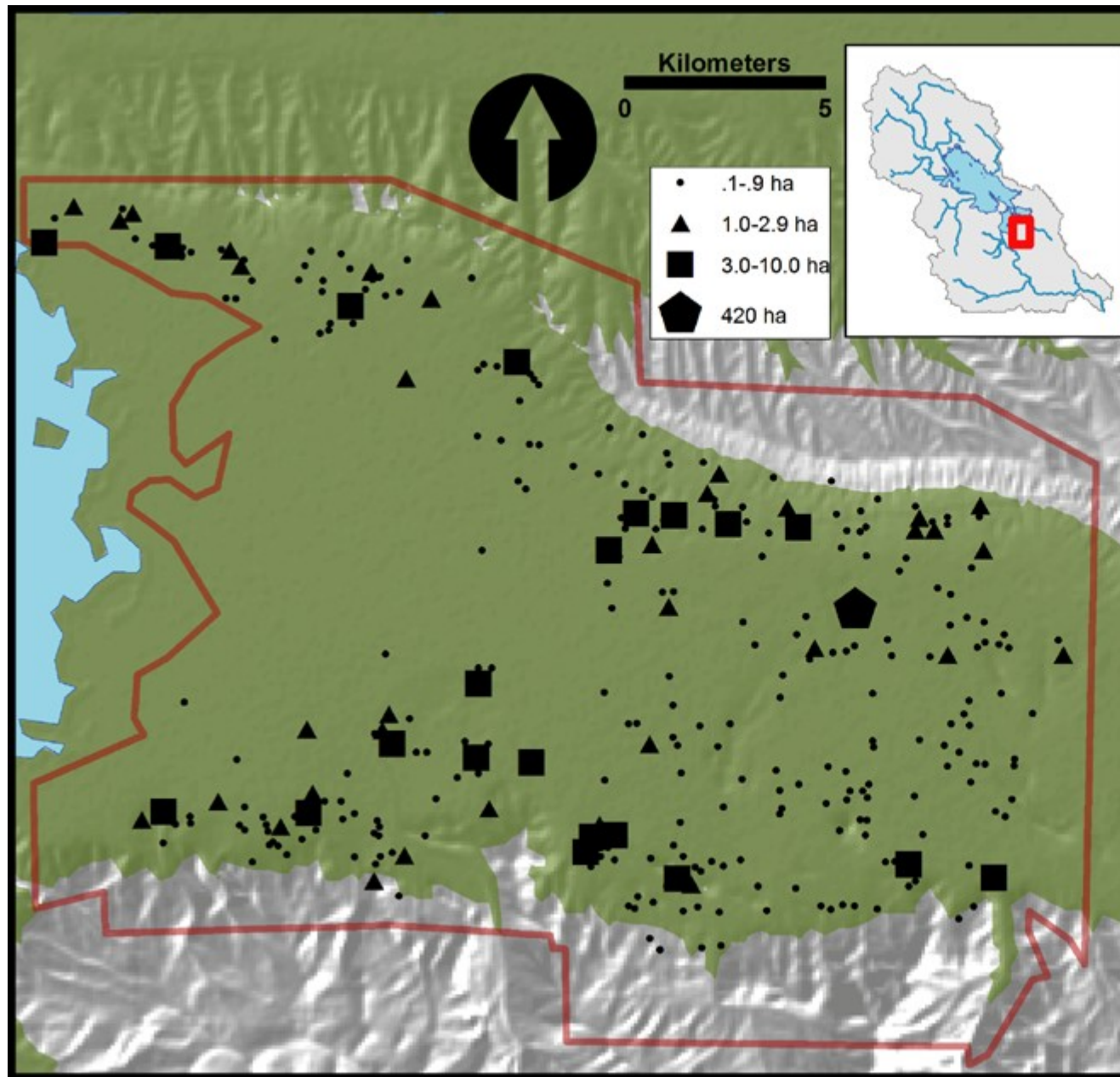




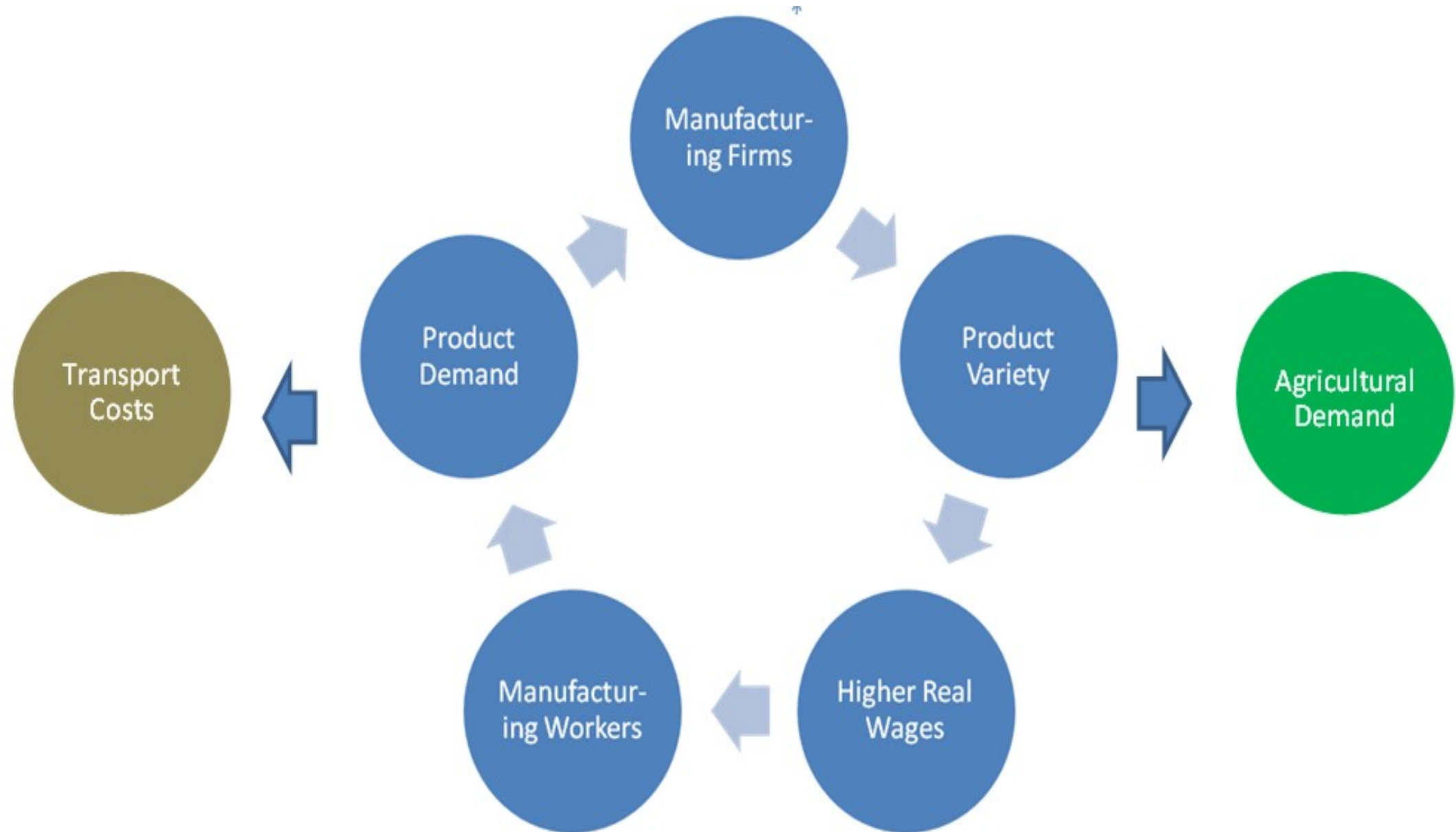
Stanish (2003)

Period	Dates	Hamlets	Small Villages	Large Villages	Primary Regional Centers	Secondary Regional Centers	Primate Regional Centers	Primary Urban Center
Early Formative	2000-1300 B.C.	X	X					
Middle Formative	1300-500 B.C.	X	X	X	X			
Upper Formative	500 B.C.-A.D. 400	X	X	X	X	X	X	
Tiwanaku	A.D. 400-1000	X	X	X	X	X	X	X

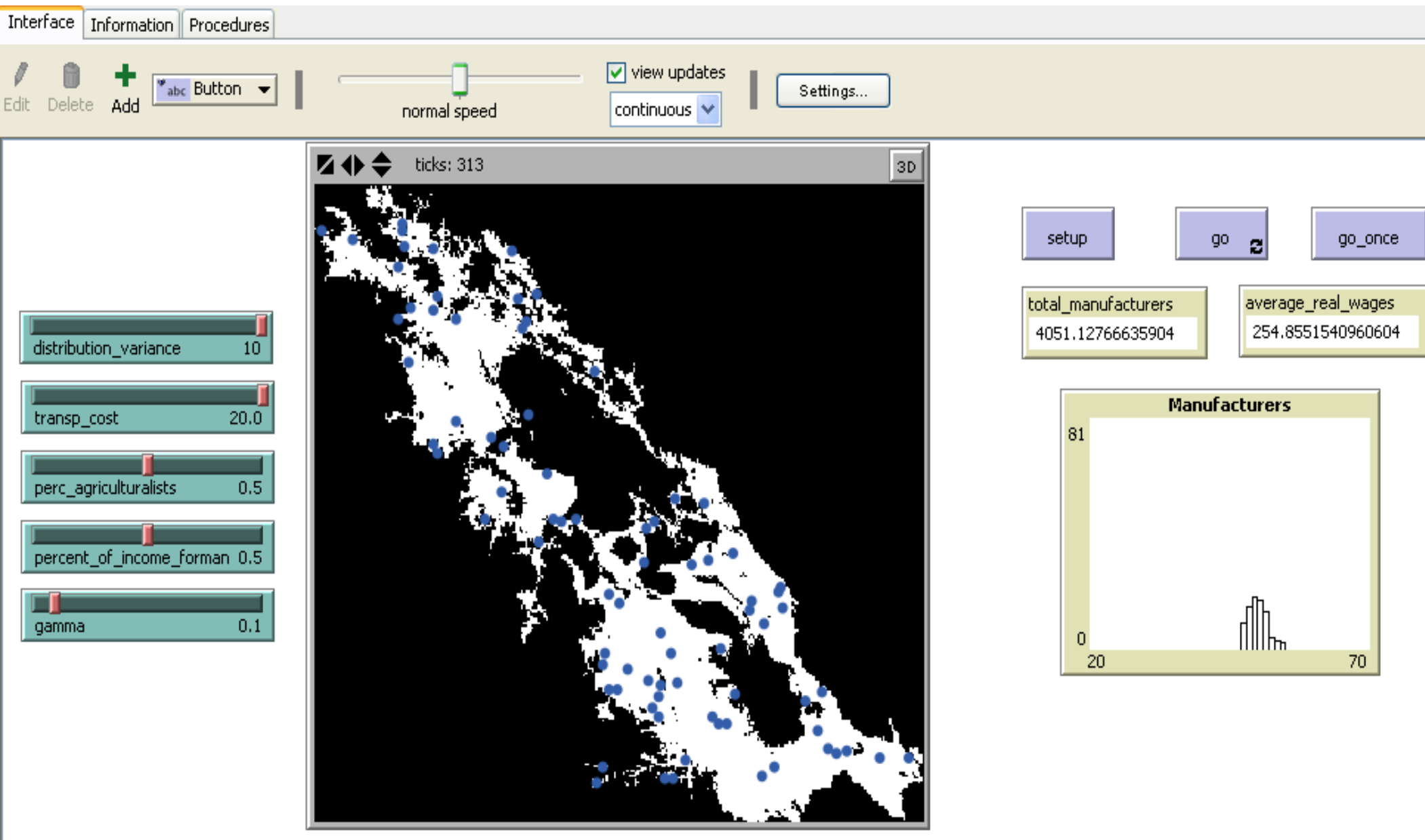
Tiwanaku Period Settlement Distribution Sample



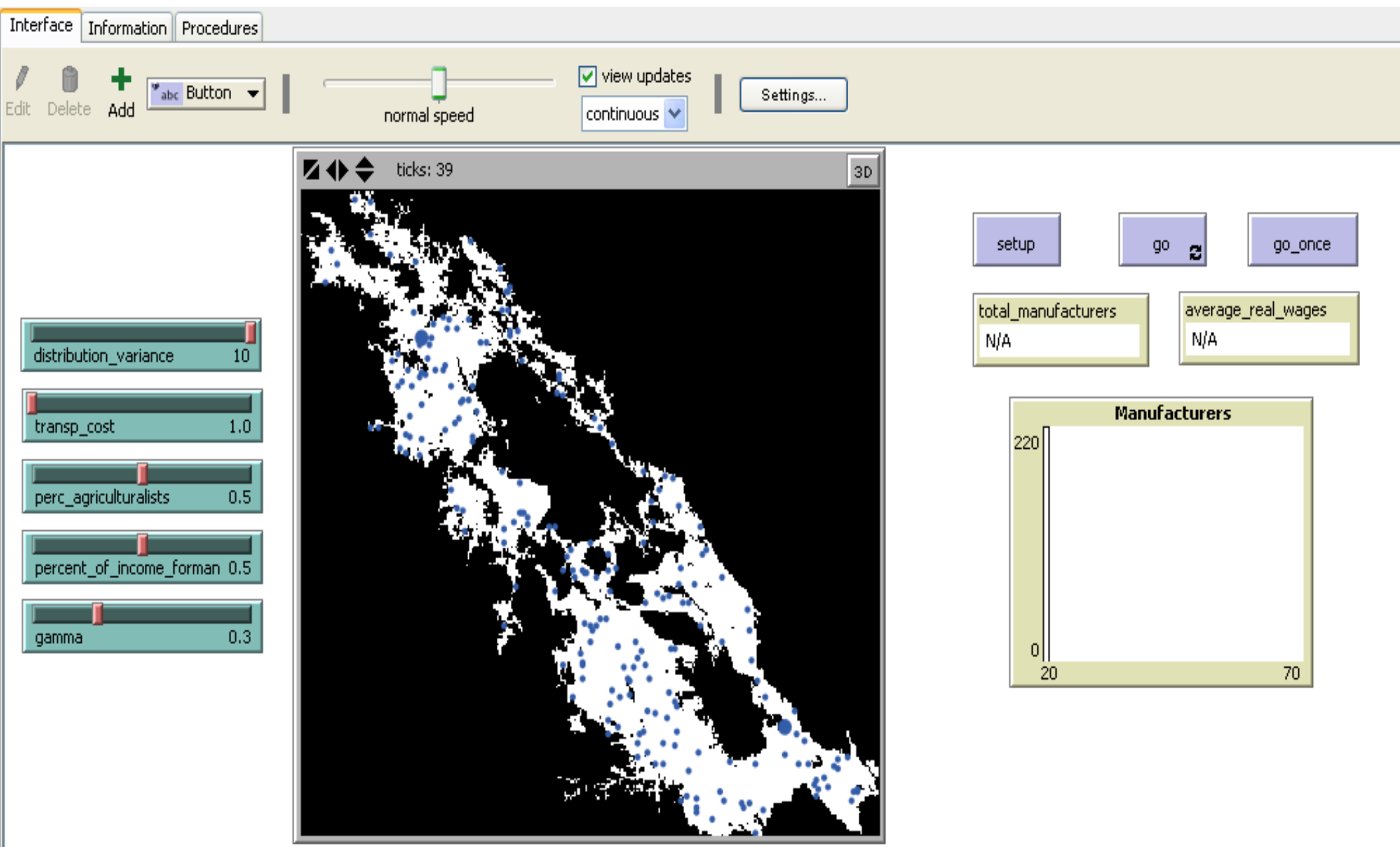
Framework for an Economic Geography ABM



Working Model



Working Model



References Cited

Fujita, M., Krugman, P. and Venables, A.J.

1999. The Spatial Economy. MIT Press.

Krugman, Paul

1991 Increasing Returns and Economic Geography. Journal of Political Economy 99(3):483-499.

McAndrews, Tomothy, Juan Albarracin-Jordan, and Marc Bermann

1997 Regional Settlement Patterns in the Tiwanaku Valley of Bolivia. Journal of Field Archaeology 24:68-83.

Stanish, Charles

2003 Ancient Titicaca: The Evolution of Complex Society in Southern Peru and Northern Bolivia. University of California Press, Berkeley.

Acknowledgements

This work was partially supported by the Santa Fe Institute through NSF Grant No. 0200500 entitled "A Broad Research Program in the Sciences of Complexity." Many participants in the 2009 SFI Complex Systems Summer School offered thoughtful comments and valuable insights. Dr. Chip Stanish and Karl La Favre, UCLA, provided helpful information and data for model validation.