



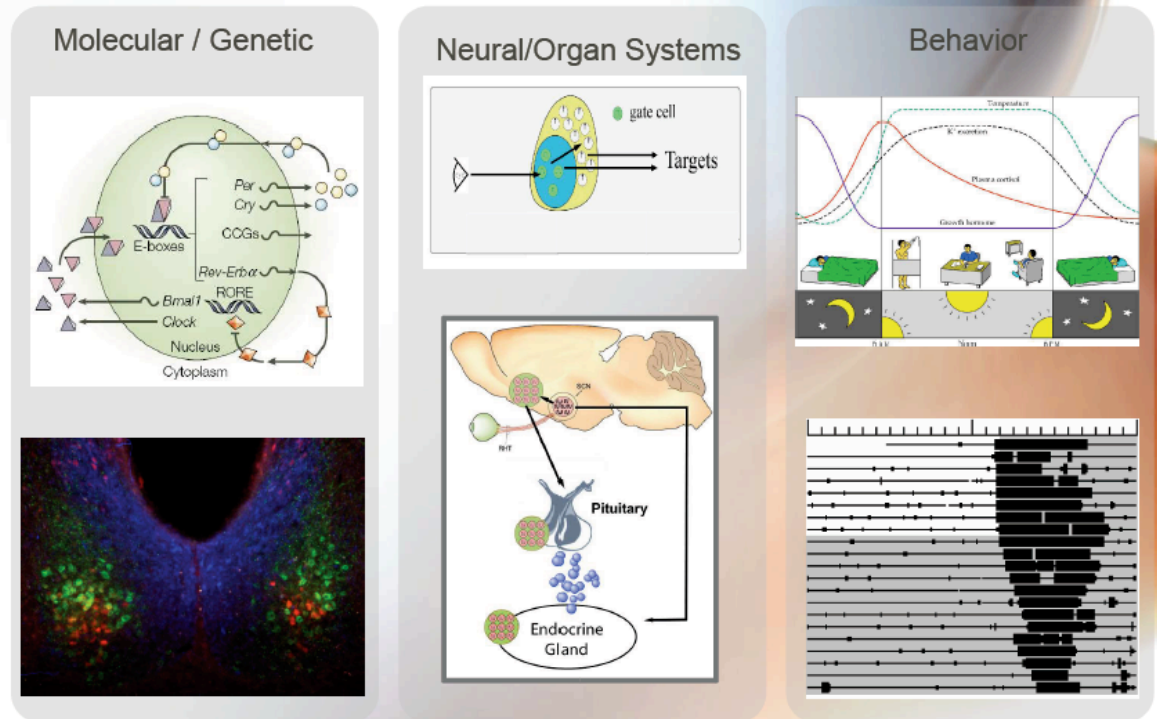
The NSF

Rae Silver
Kaplan Professor of Natural and Physical Sciences
Columbia University

Senior Advisor
Office of the
Director

6 March 2006

Integration example: Circadian Rhythms



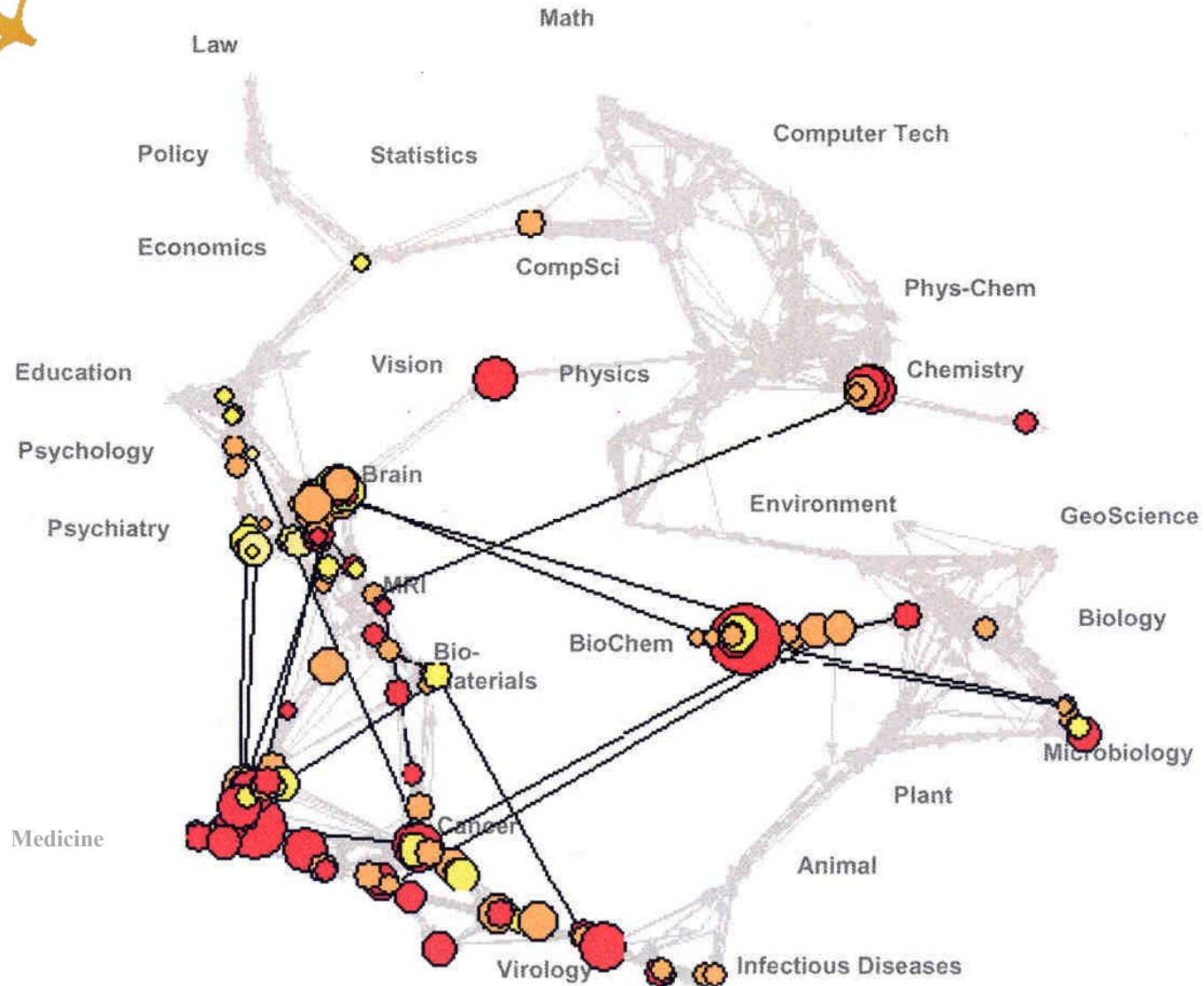


“Transformational” research Thinking Outside the Norm

- Is less predictable in its course and outcomes
- May not fit comfortably within scope of project-focused, innovate, step-by-step research
- May not fare well in a panel-based system if experts are invested in current paradigms
- Investigators may be reluctant to submit radical or paradigm-shifting ideas, especially when there are scarce resources
- Desirable to evaluate the creative potential of the researchers as on the merit of proposed idea



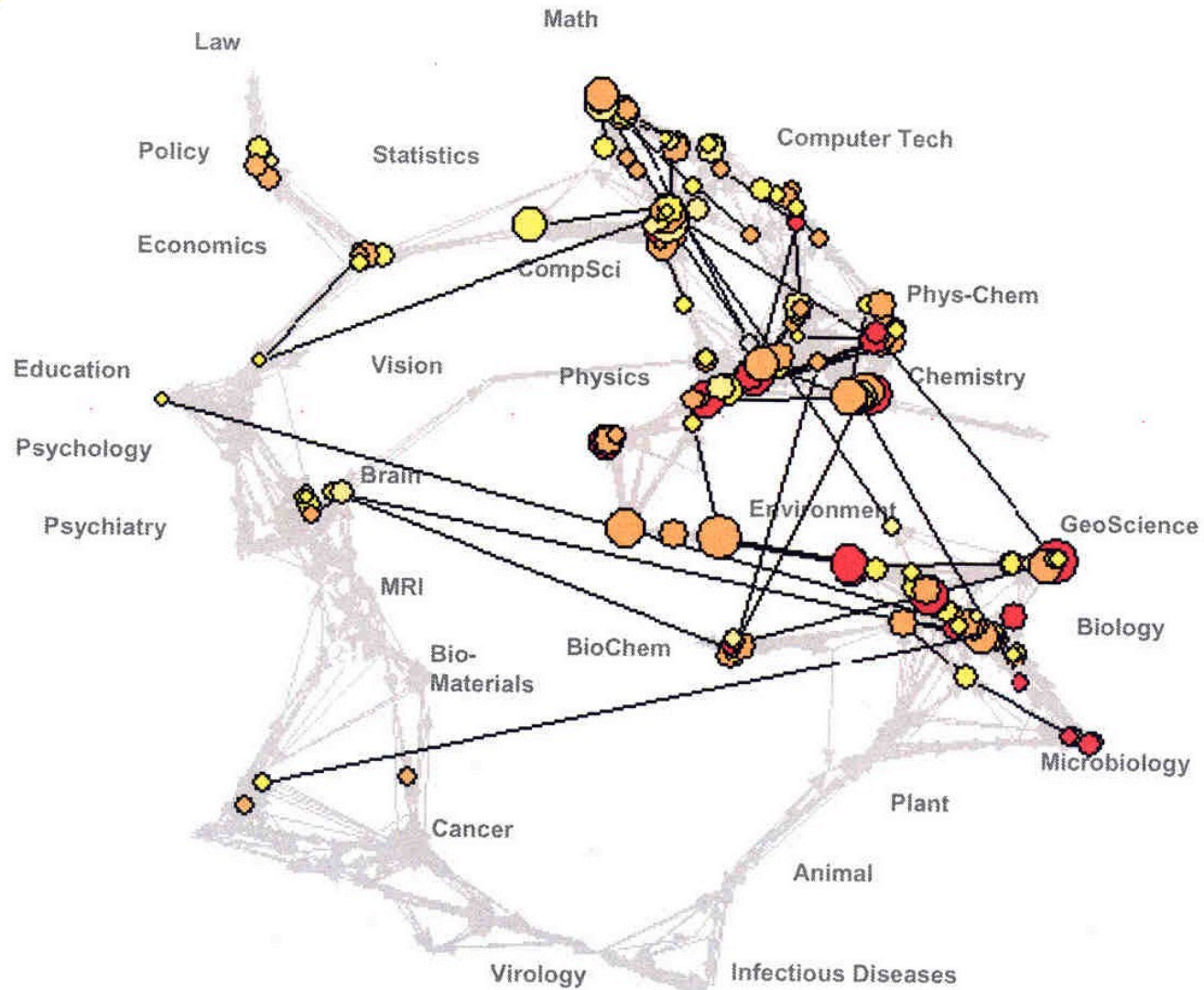
Science Funding - NIH



Katy Börner



Science Funding - NSF

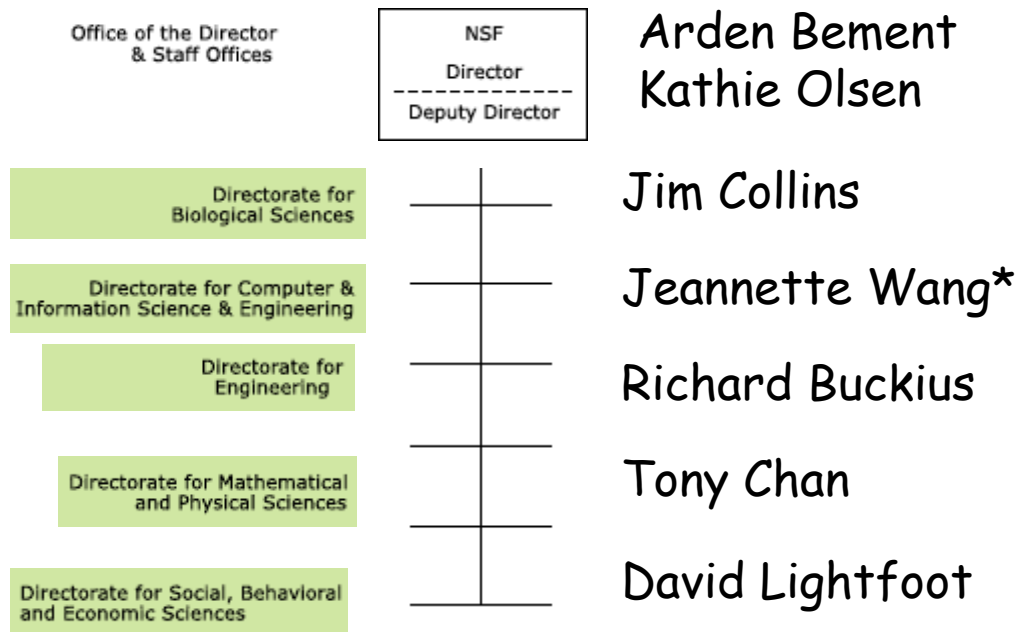


Katy Börner

National Science Foundation

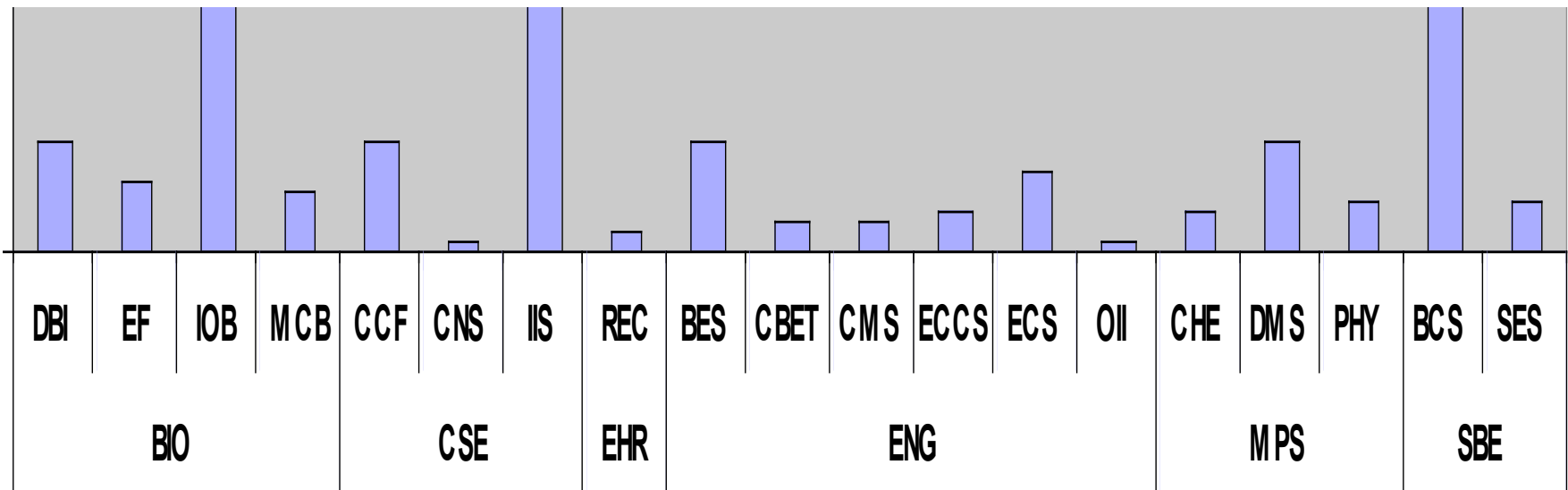


The NSF





Planning for this NSF Meeting



- Dr Brent Miller and many colleagues in BIO

Perspectives on Opportunities in Neuroscience

Neuroethological and Developmental Mechanisms: Molecular and Cellular Approaches

Eve Marder, Brandeis University

Organization of Behavior: Emerging Principles

Partha Mitra, Cold Spring Harbor Laboratory

Plasticity, Learning, and Development

Jay McClelland, Stanford University

Signal Processing and its Development in the Brain

Emery Brown, Massachusetts Institute of Technology

Measuring the Brain: From Synapse to Thought

Jonathan Sweedler, University of Illinois

Cognitive Systems Across Levels of Analysis in Brain Systems

Nancy Kanwisher, Massachusetts Institute of Technology

Biomimetic Computational Systems

Ted Berger, University of Southern California