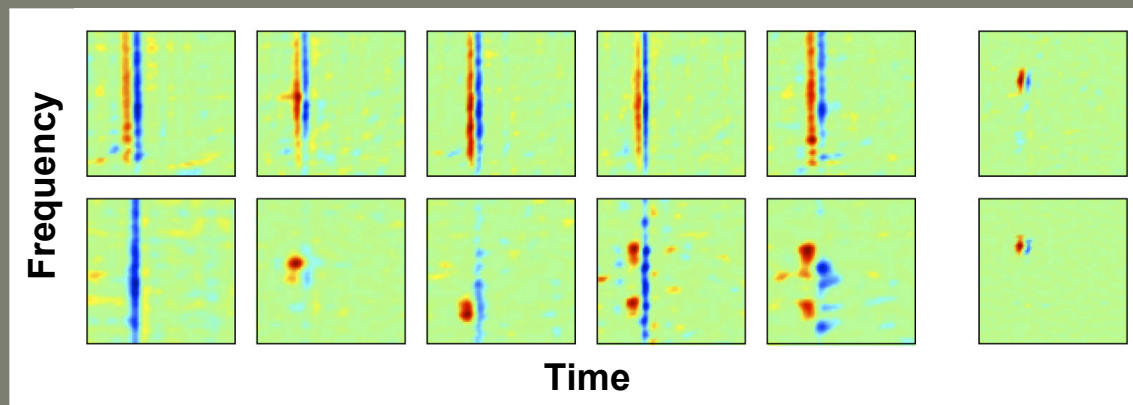
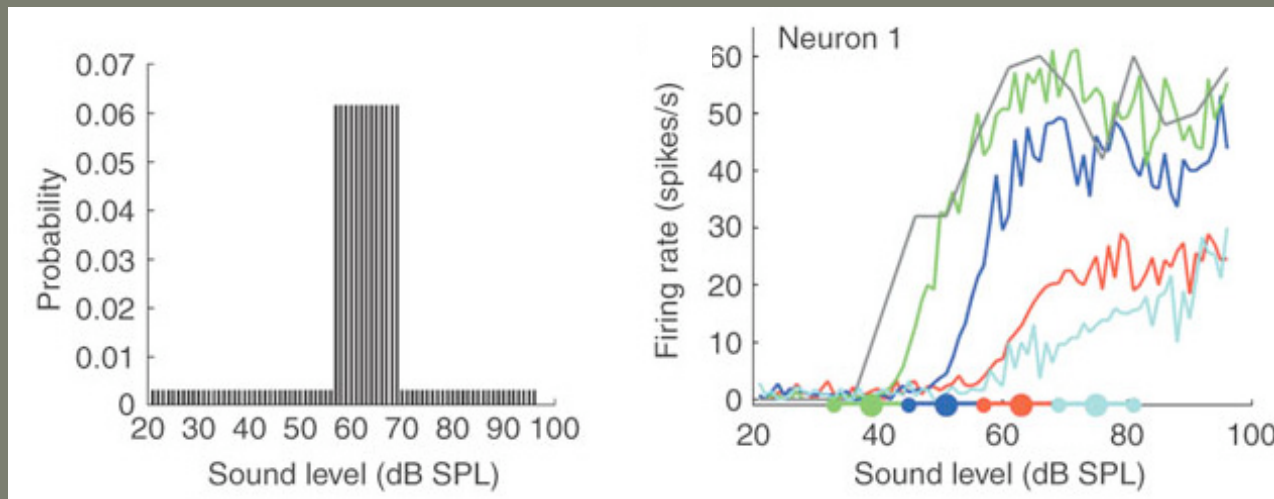


Probabilistic Processing States in the Brain

Plasticity in coding properties of single neurons leads to adjustments in dynamic ranges in coding and population responses



May explain discrepancies in single neuron coding and behavioral discrimination

Critical Periods in Learning

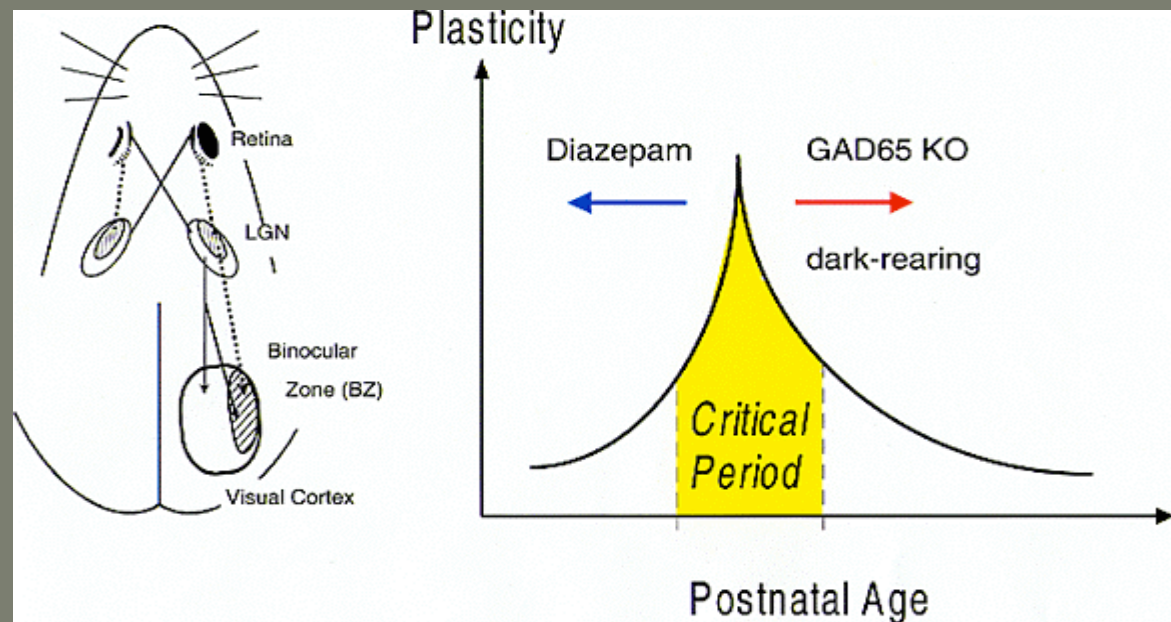
Interaction between neural **development** and **sensory input** in the acquisition of learned behavior

Models for direct relationships between neural **plasticity** and behavioral plasticity/learning

Imprinting
Sound localization
Song learning
Language acquisition

Much is now known about critical periods in sensory system development

What about in behavioral development?



Hensch, 2006