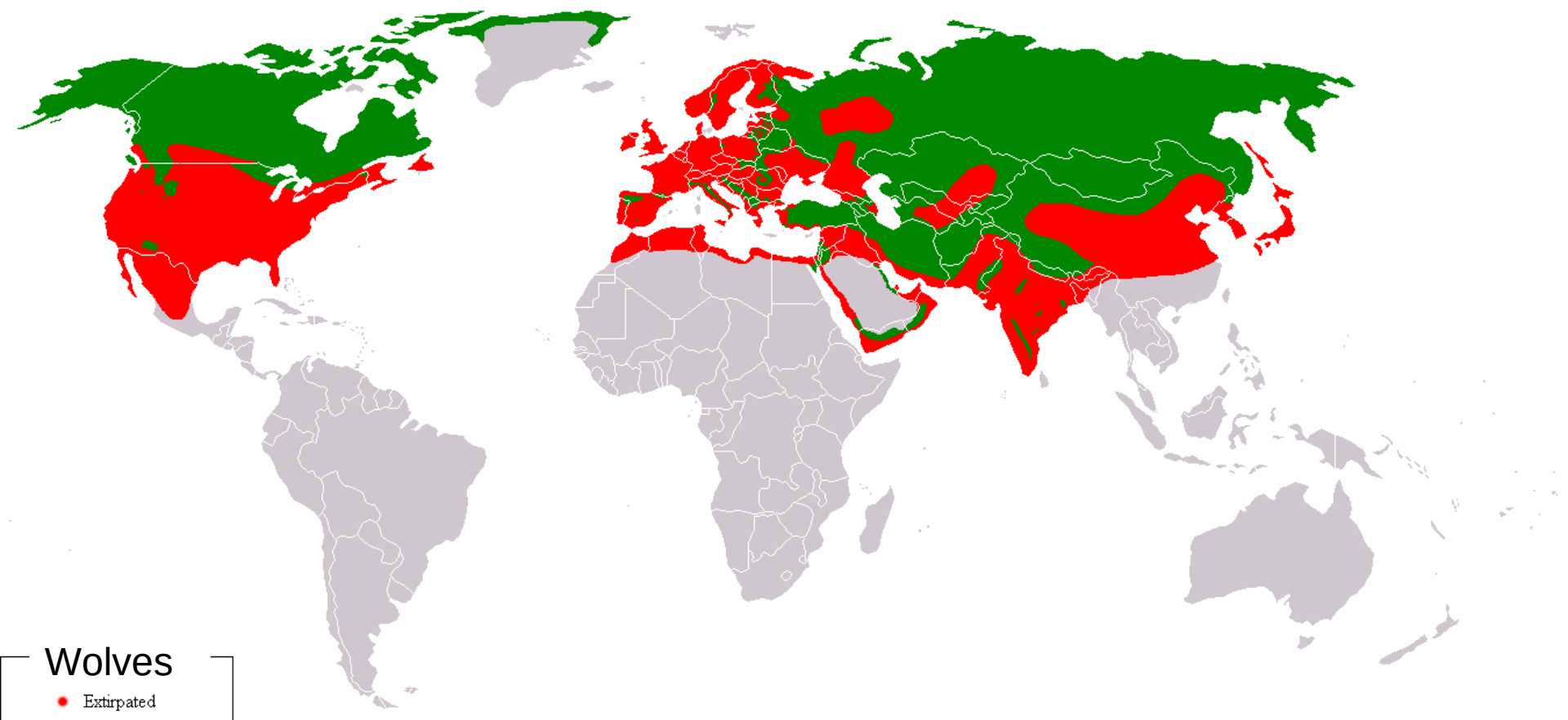
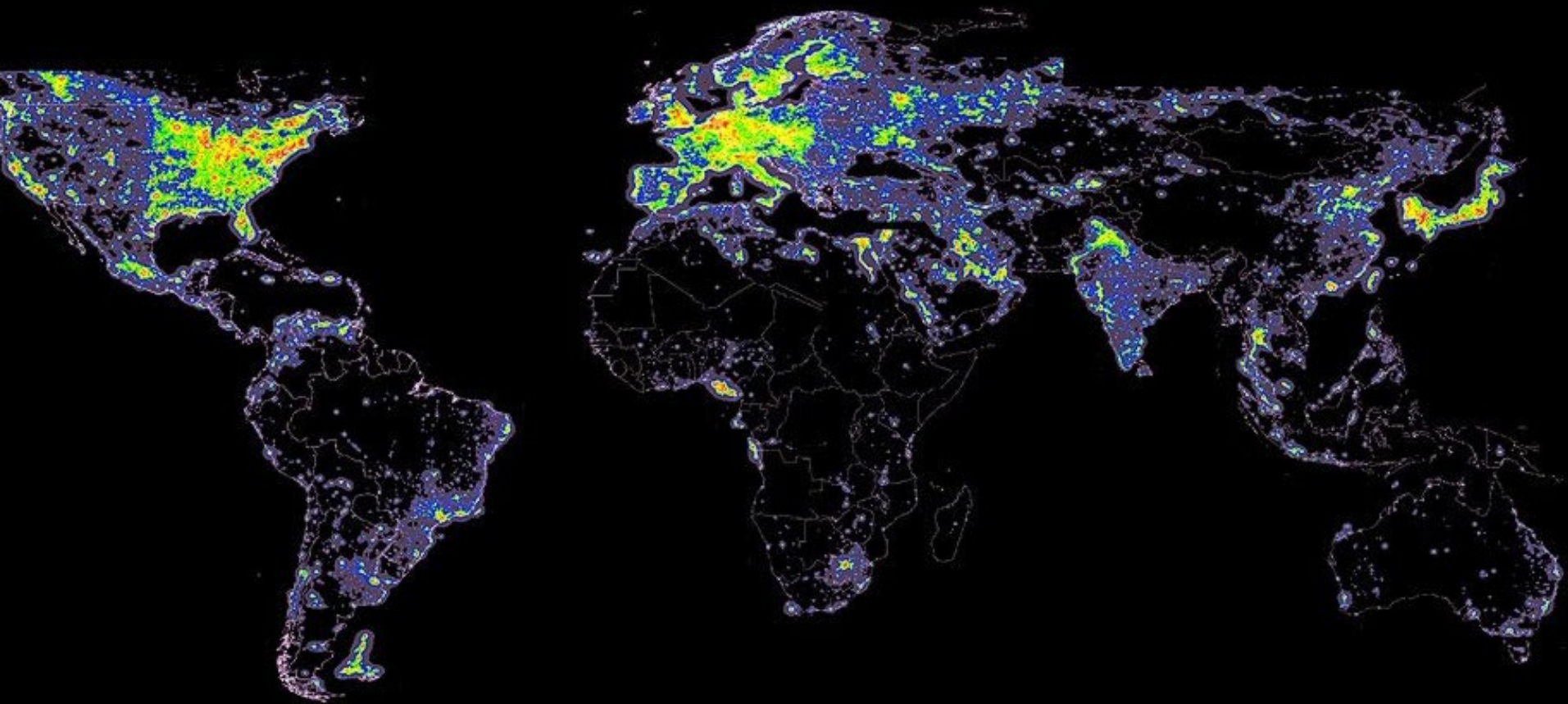


Are humans outliers in the
natural world?









How were we able to do this?

Usual explanation:





Not a ridiculous question





So, will you make
it?

I don't like your
chances



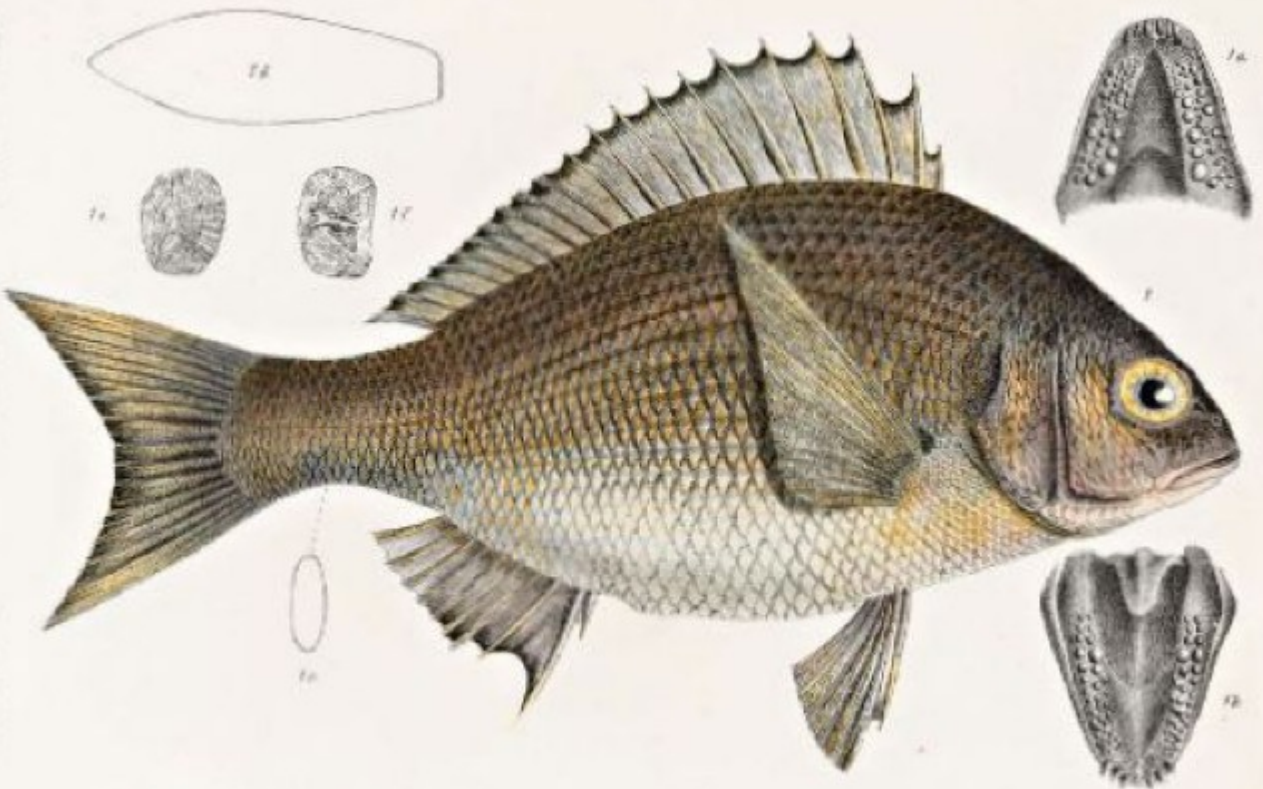












A. Marshallianum 10 1/2 inch

Not 10 1/2 inch

10 1/2 inch



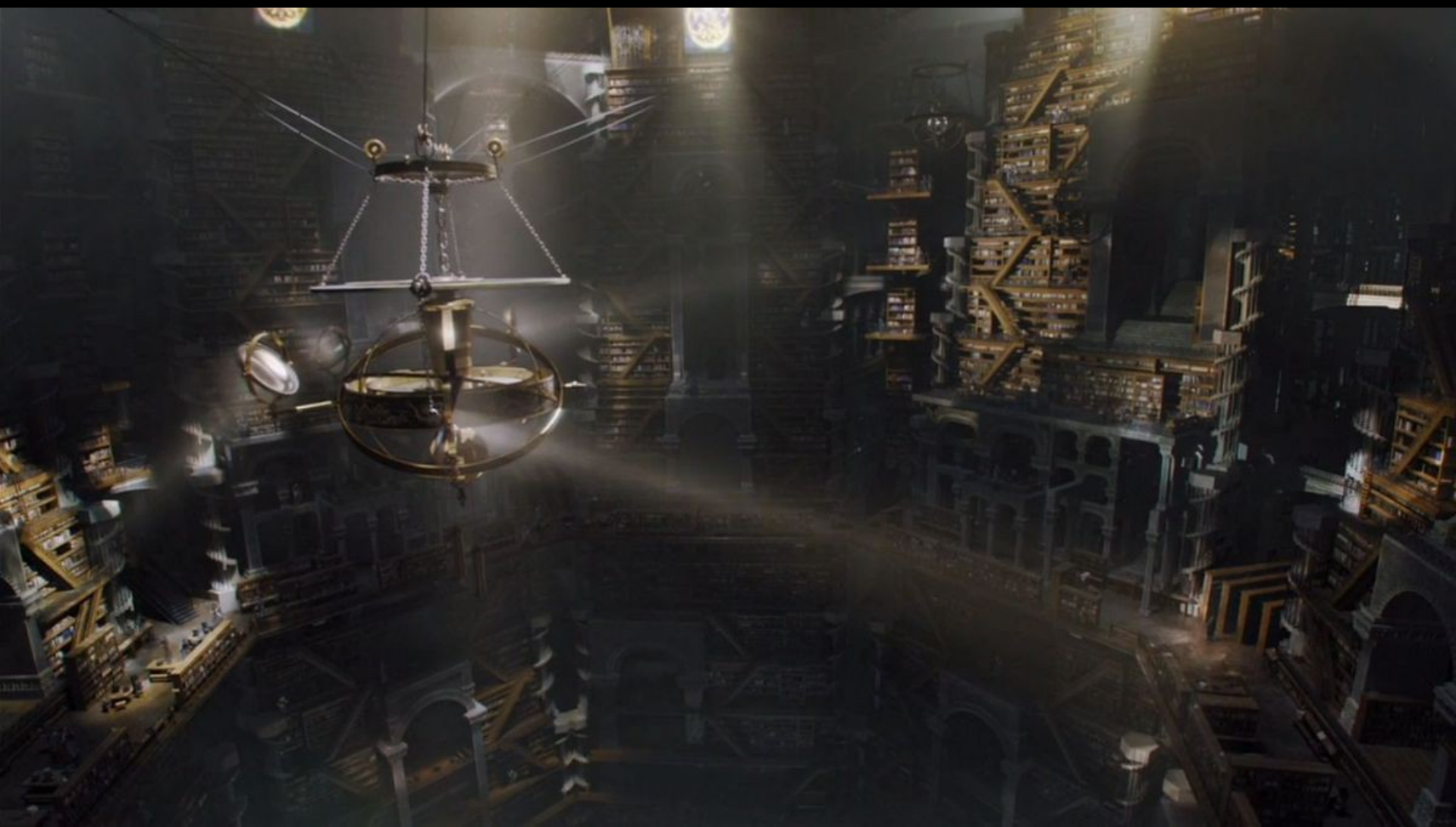






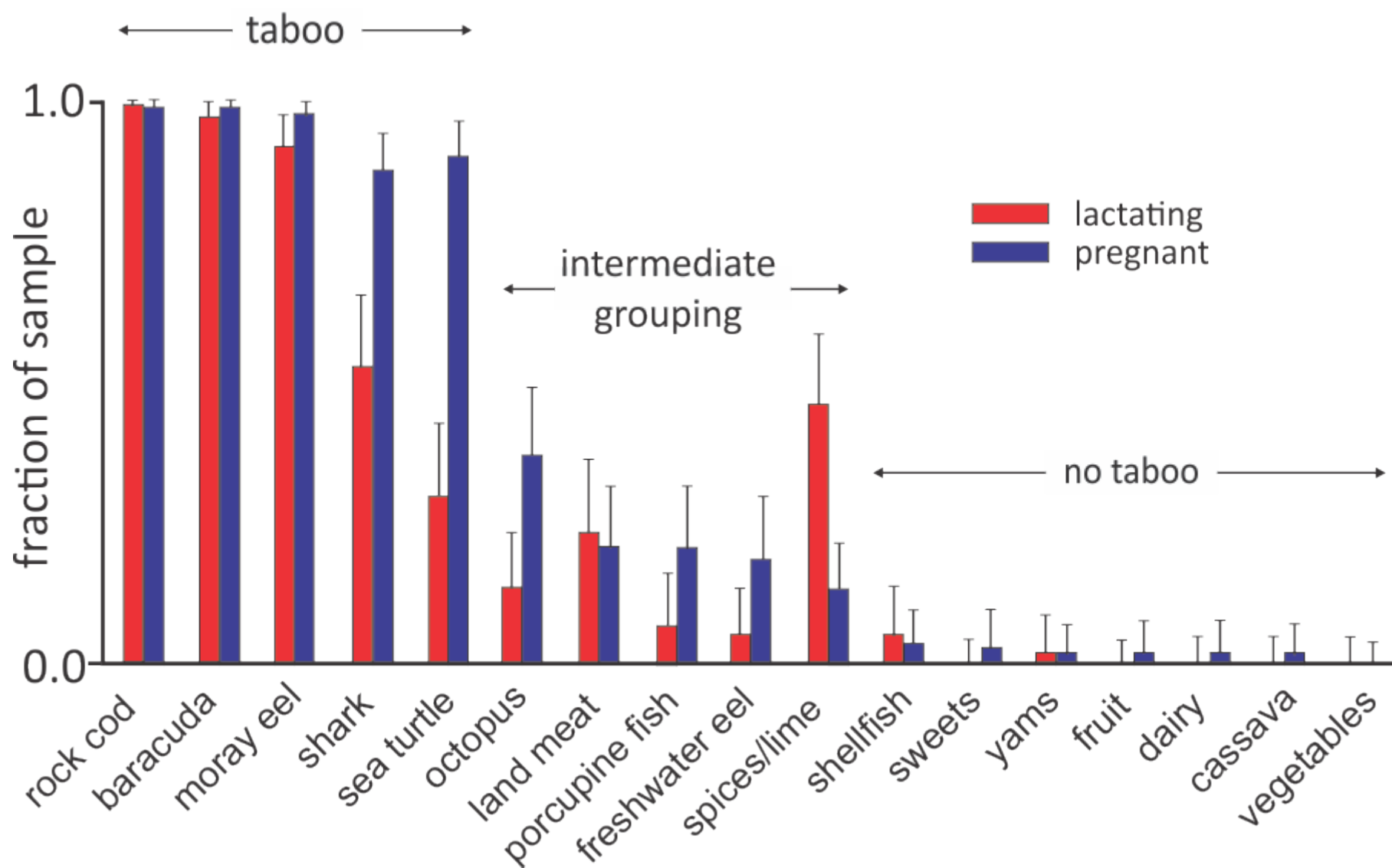


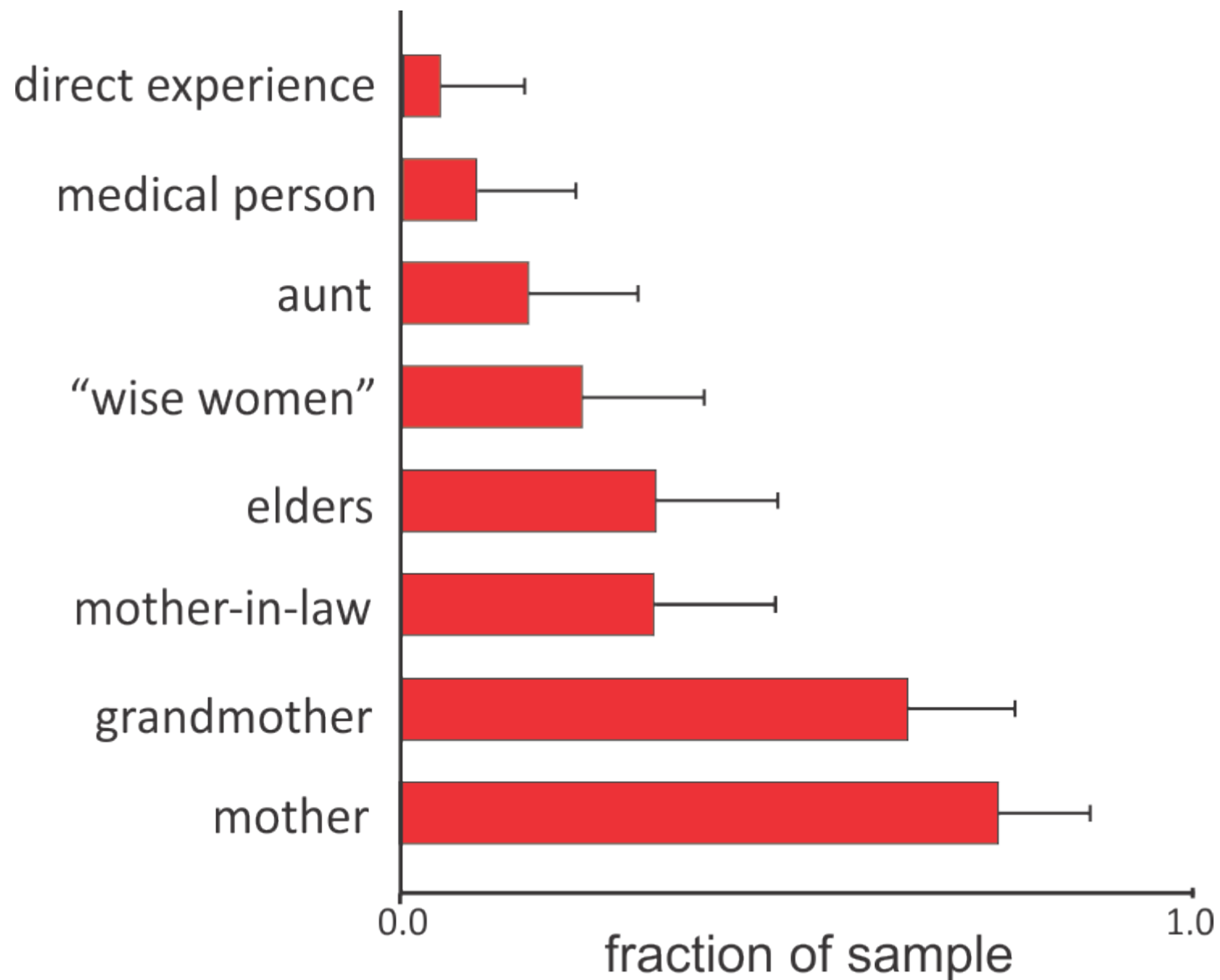
Why is cultural
information any good?







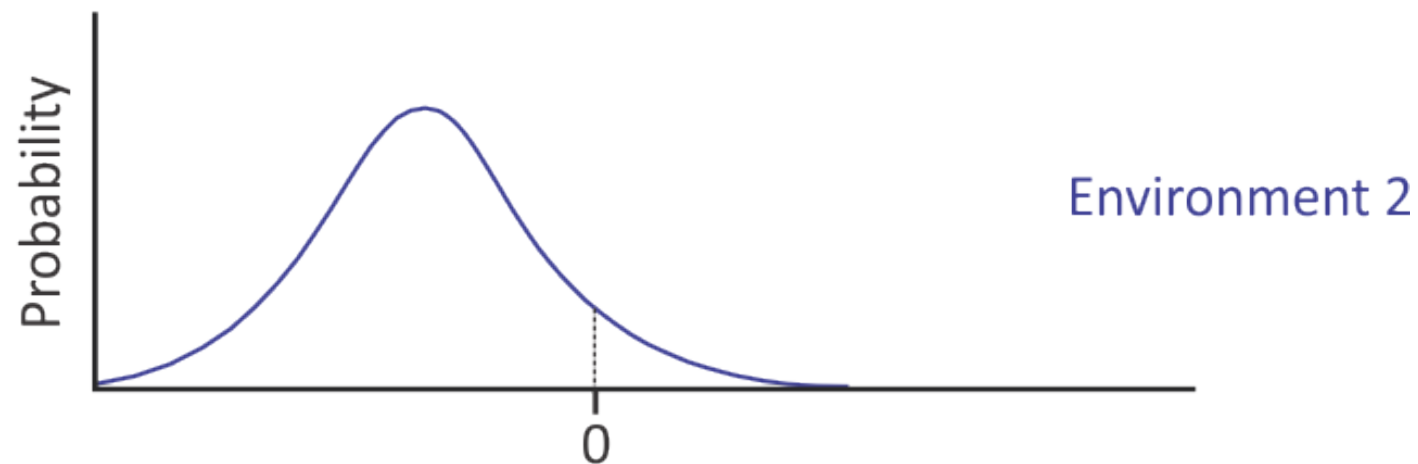
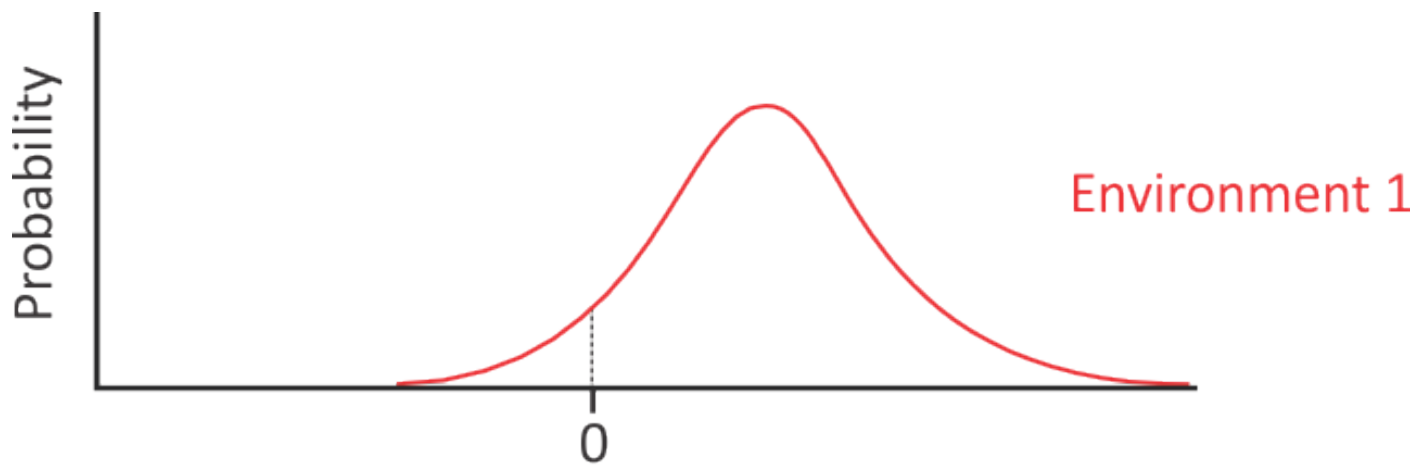




Why believe the wise women?

The evolution of imitation

1.



Environmental cue value (x)

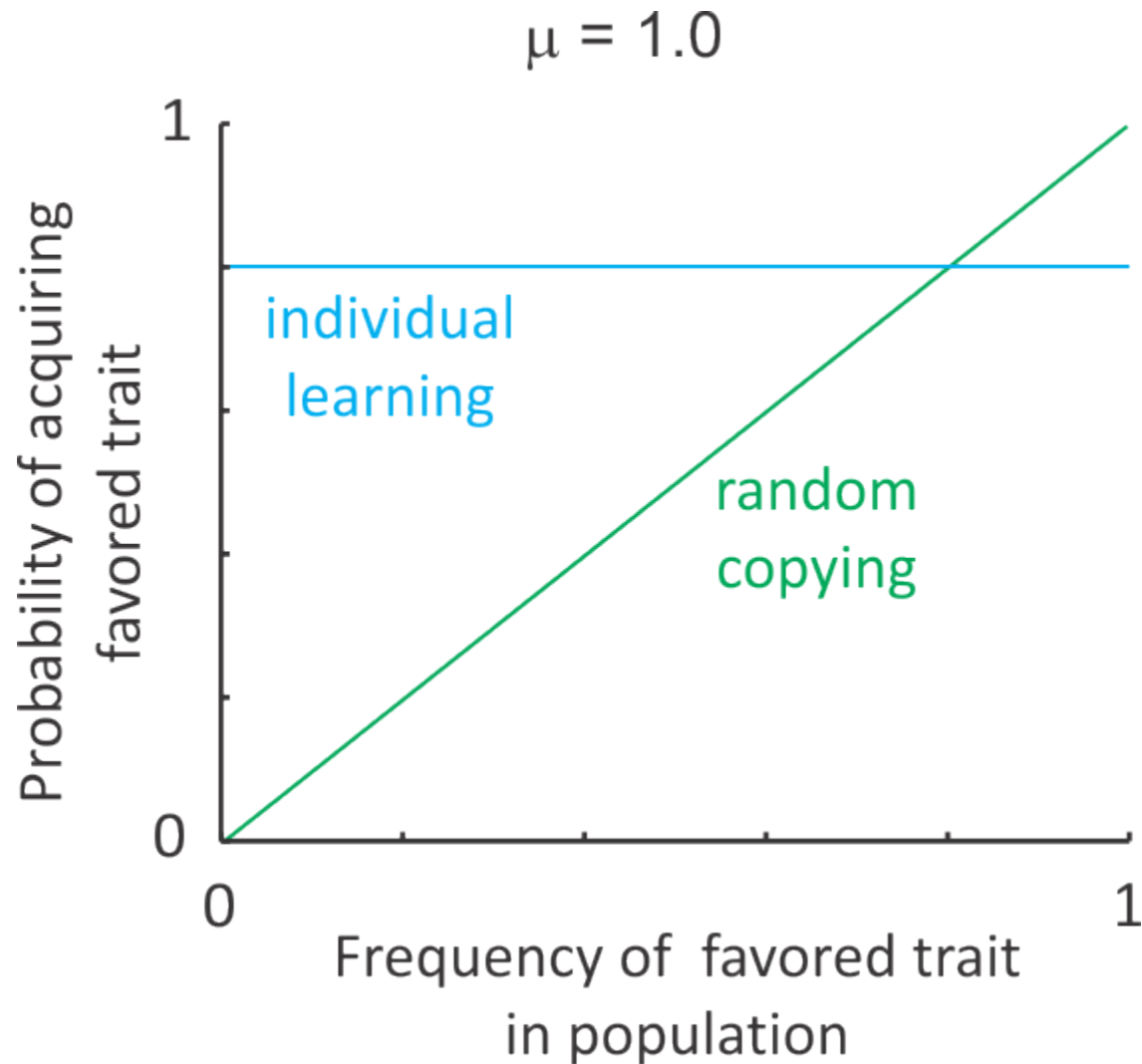
1.

2.

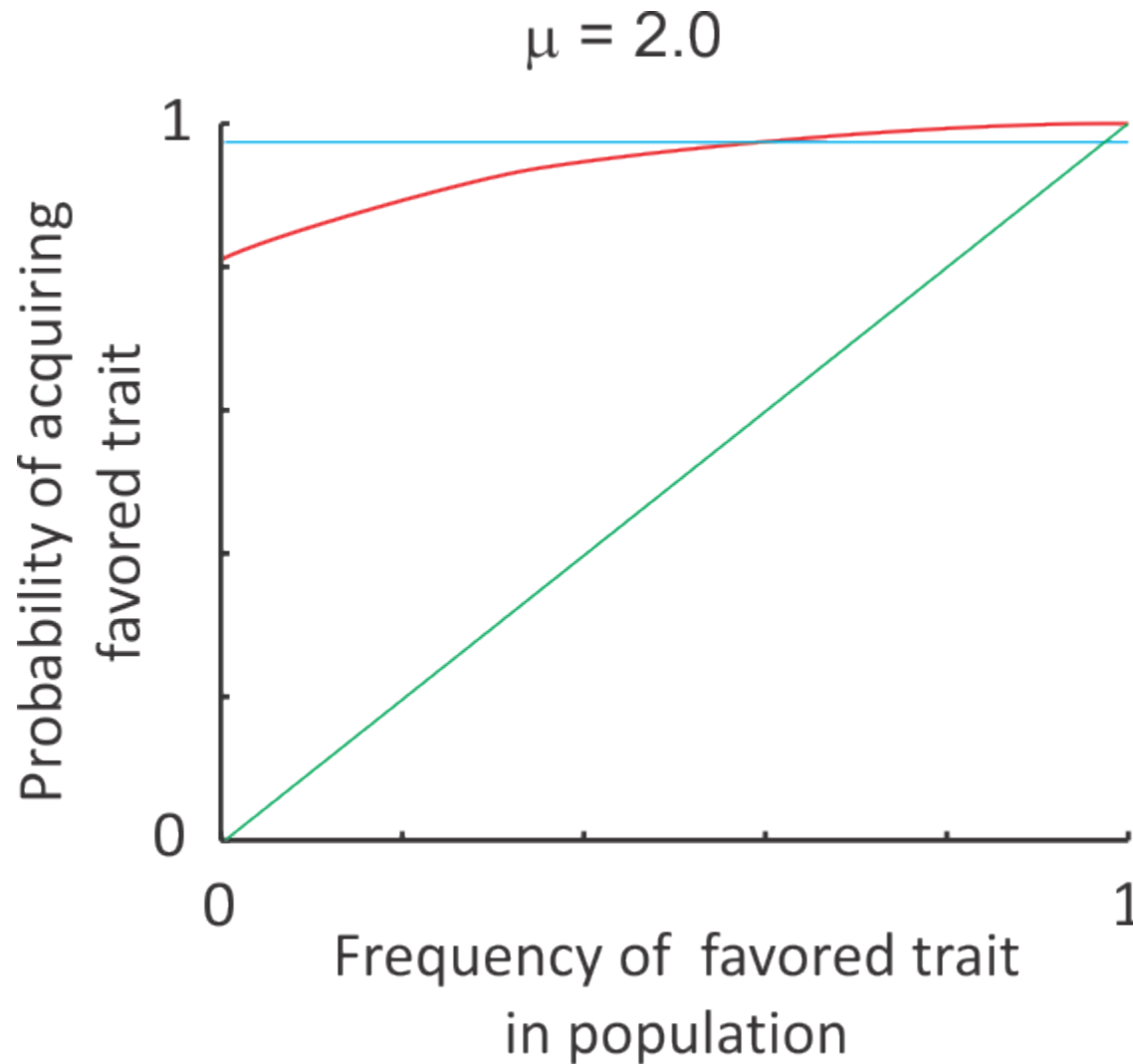
- To maximize expected fitness, choose behavior 1 if

$$j - \frac{n}{2} > -gx$$

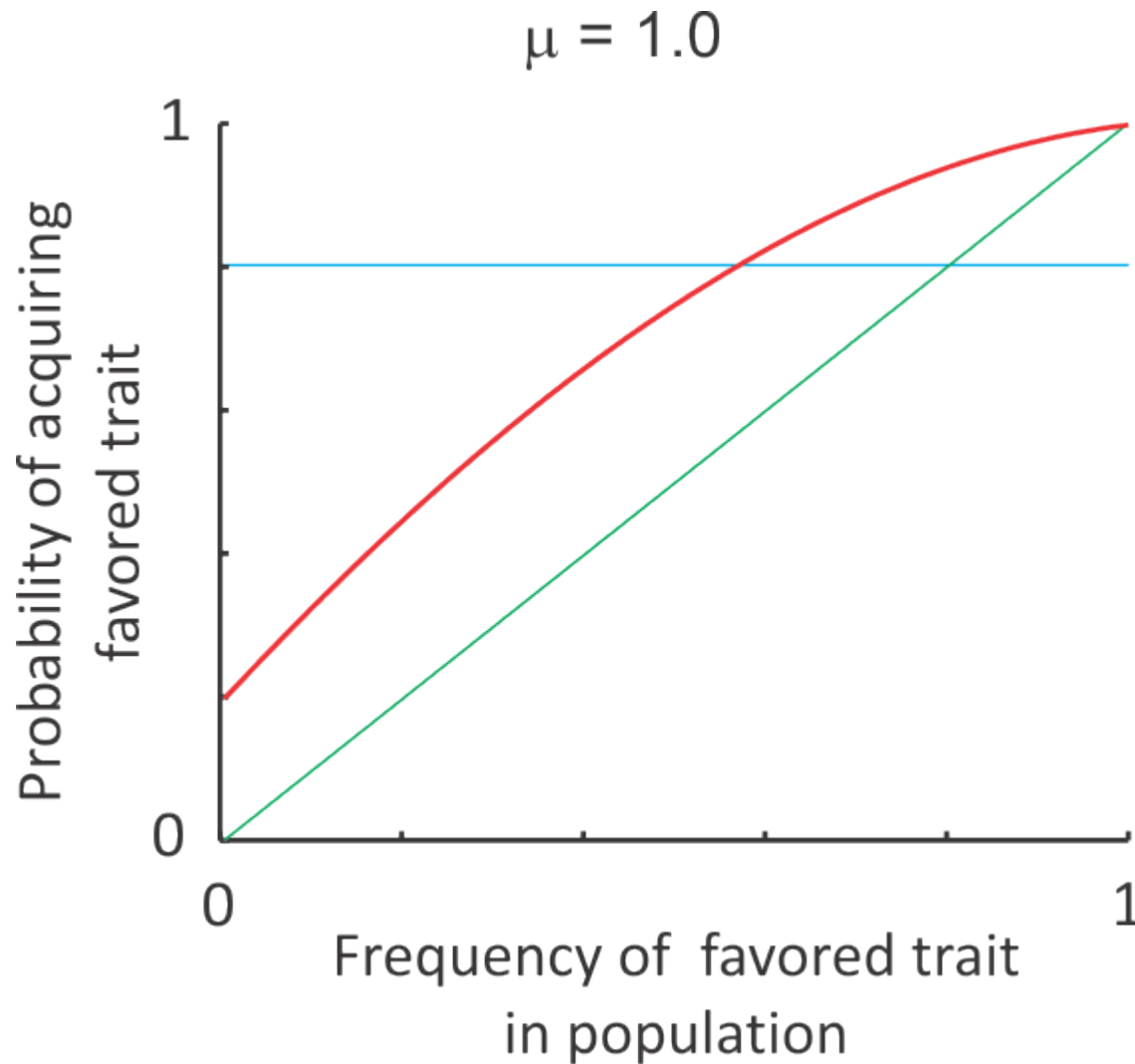
Plot equilibrium results in this space



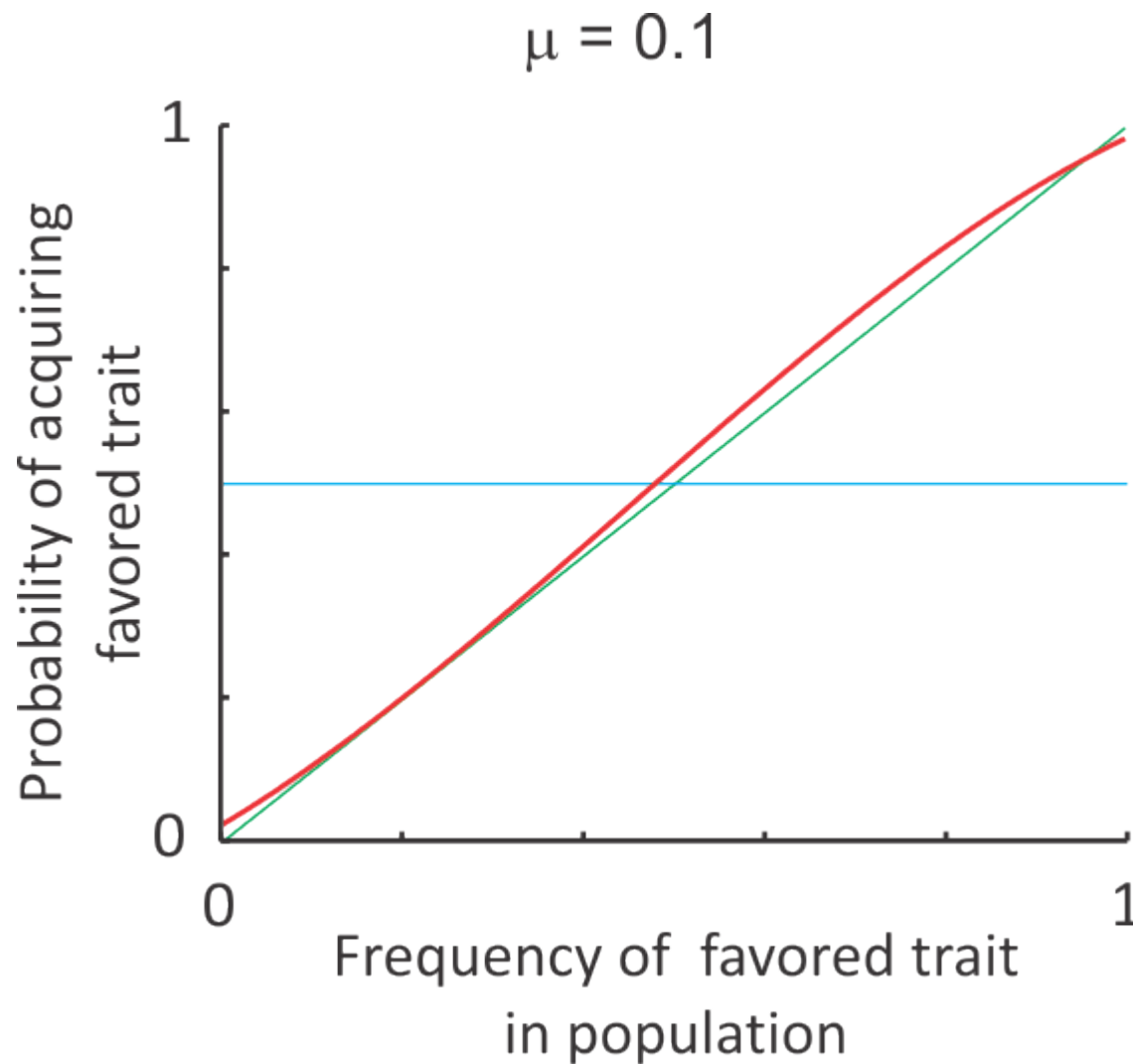
Accurate cues ! little social learning



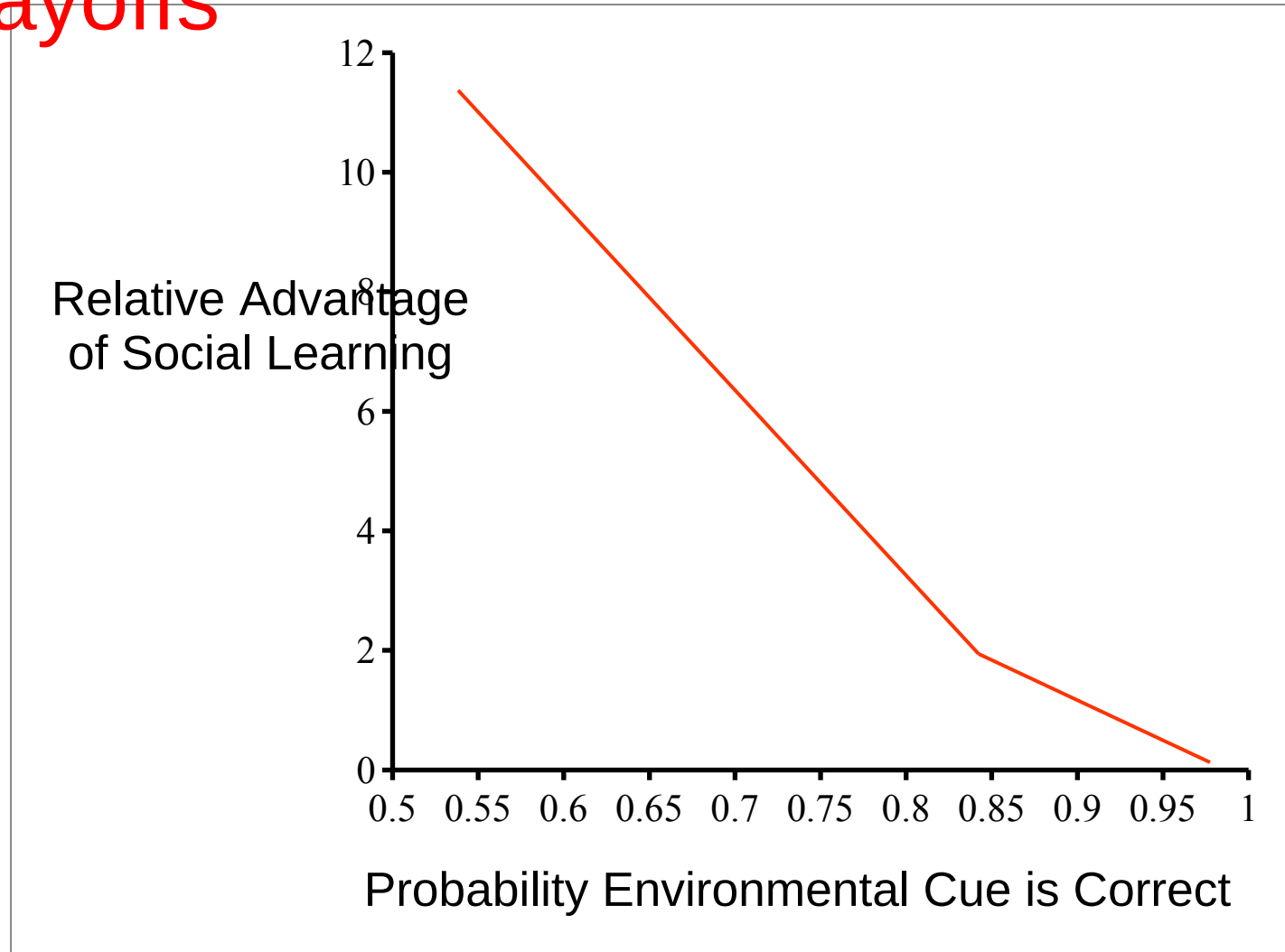
Medium quality cue ! more copying



Low quality cue ! emphasis on copying

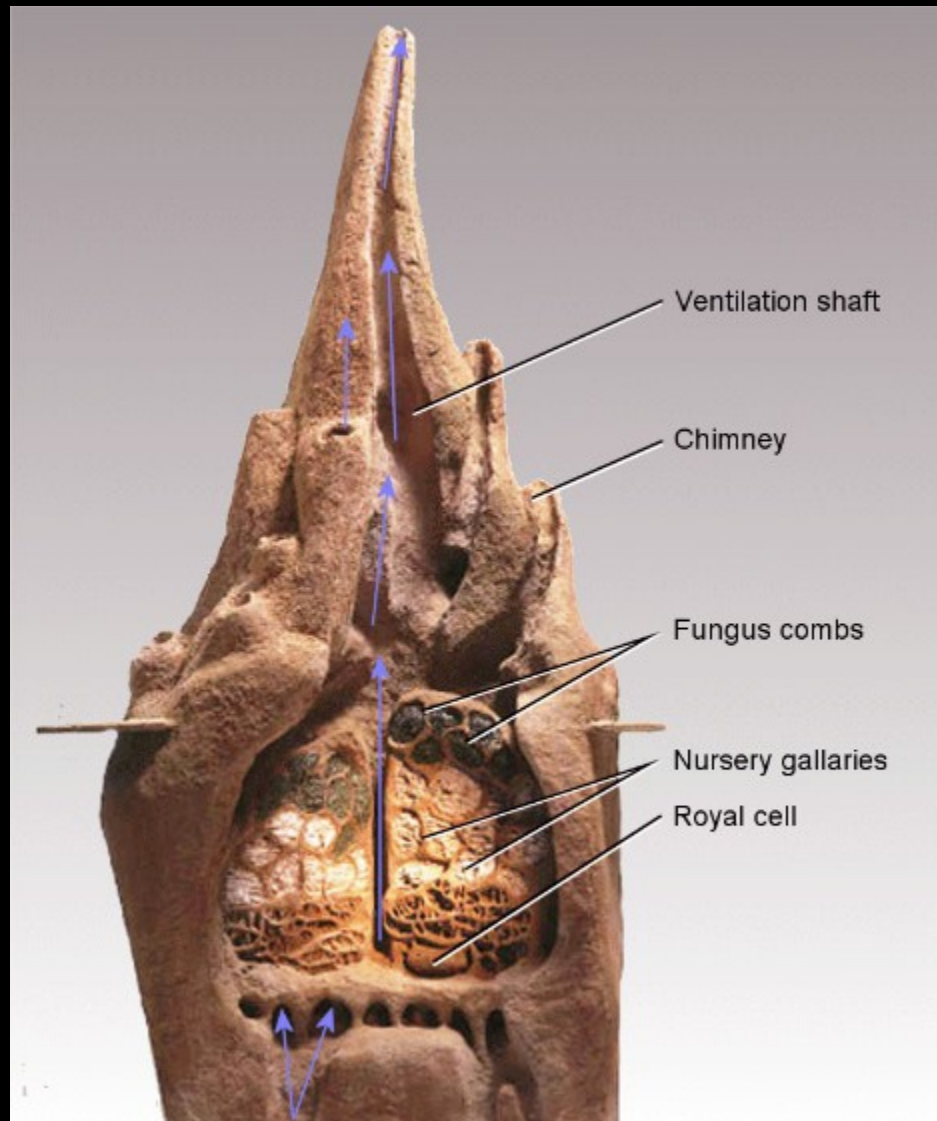


Social learning leads to higher payoffs

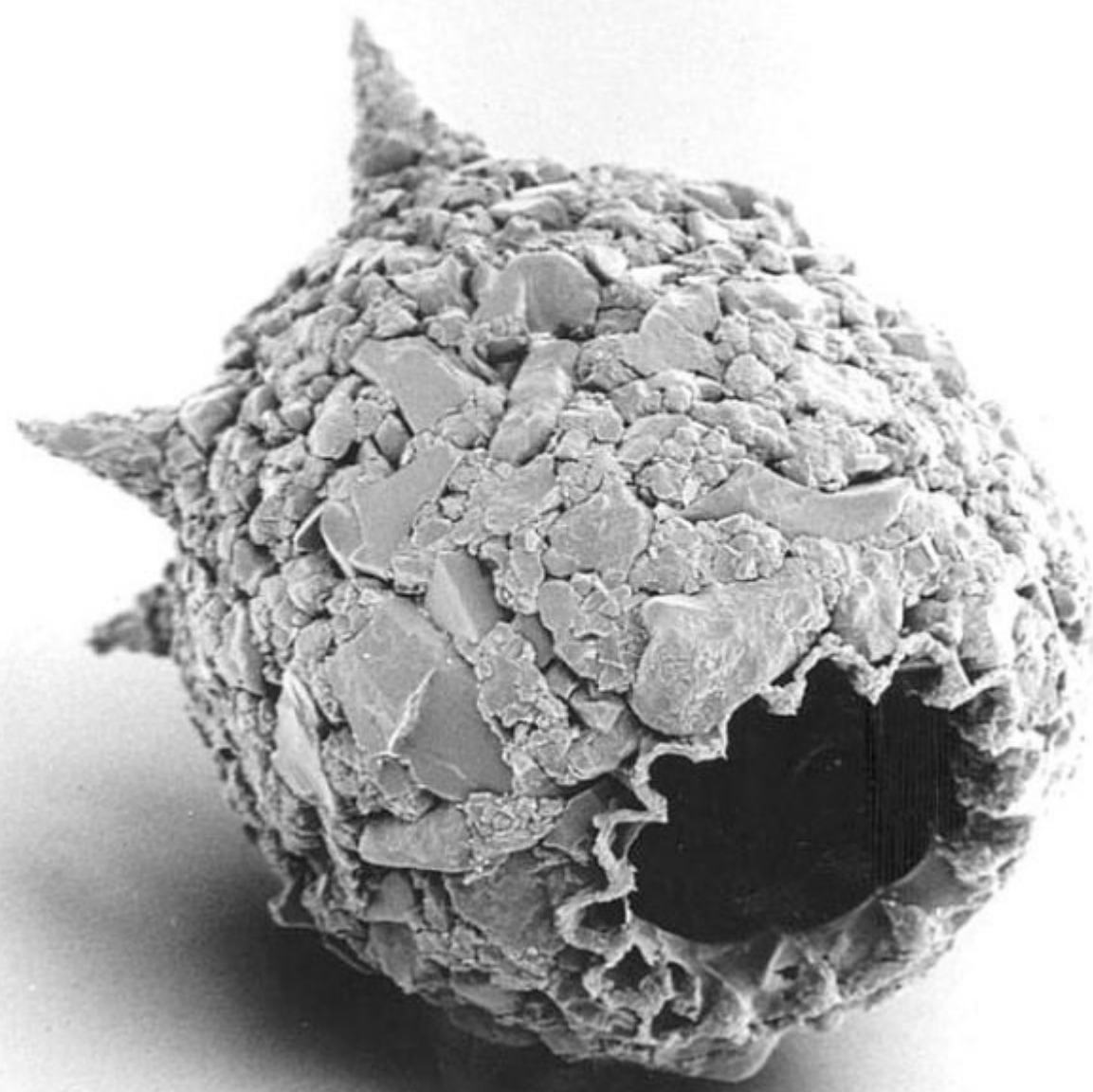


Can complex adaptations
result from such a dumb
process?





2





< **BUFFALO WEAVER**
Stick nests in large trees. Small colonies.

> **YELLOW WEAVER**
Suspended from reeds or trees. Large colonies.



< **THICKBILLED WEAVER**
Roosting nest.

> Same nest modified for breeding.

Suspended in reeds or bushes. Solitary.



> **BROWNTHROATED WEAVER**
Suspended from reeds or bushes. Solitary.



< **LESSER MASKED WEAVER**
Suspended from reeds or trees. Large colonies.



> **CAPE WEAVER**
Hanging from trees or in reeds over water or from trees away from water. Small colonies.

> **MASKED WEAVER**
Suspended from reeds or trees. Large colonies.



> **FOREST WEAVER**
Hanging from low branches in forest or dense bush. Solitary breeders but several nests often present.



< **SPECTACLED WEAVER**
Suspended from bushes or trees. Spout often longer. Small colonies.



> **GOLDEN WEAVER**
Suspended from bushes, trees or reeds. Solitary.

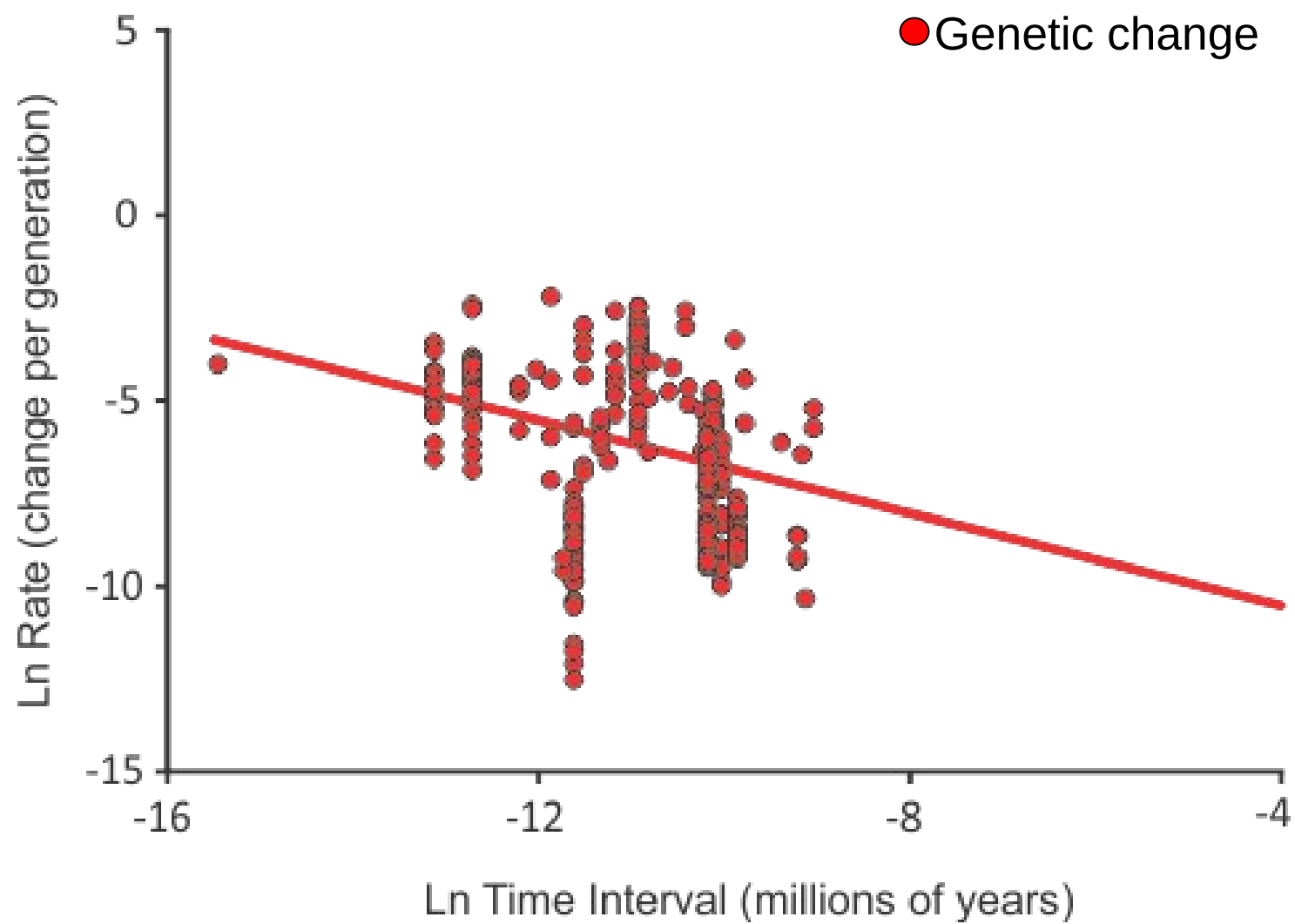


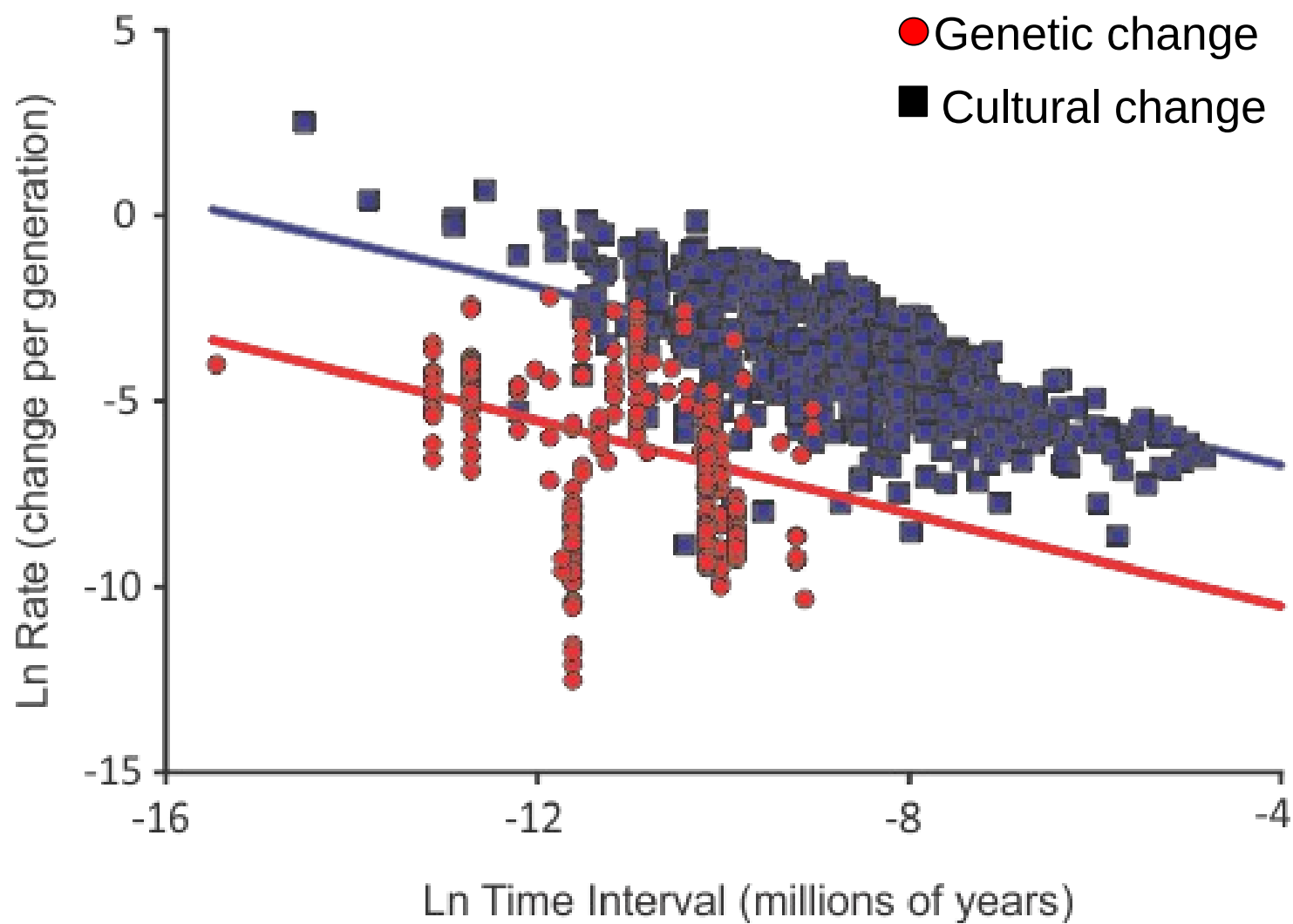
< **REDHEADED WEAVER**
Built of sticks and hung from trees. Solitary.

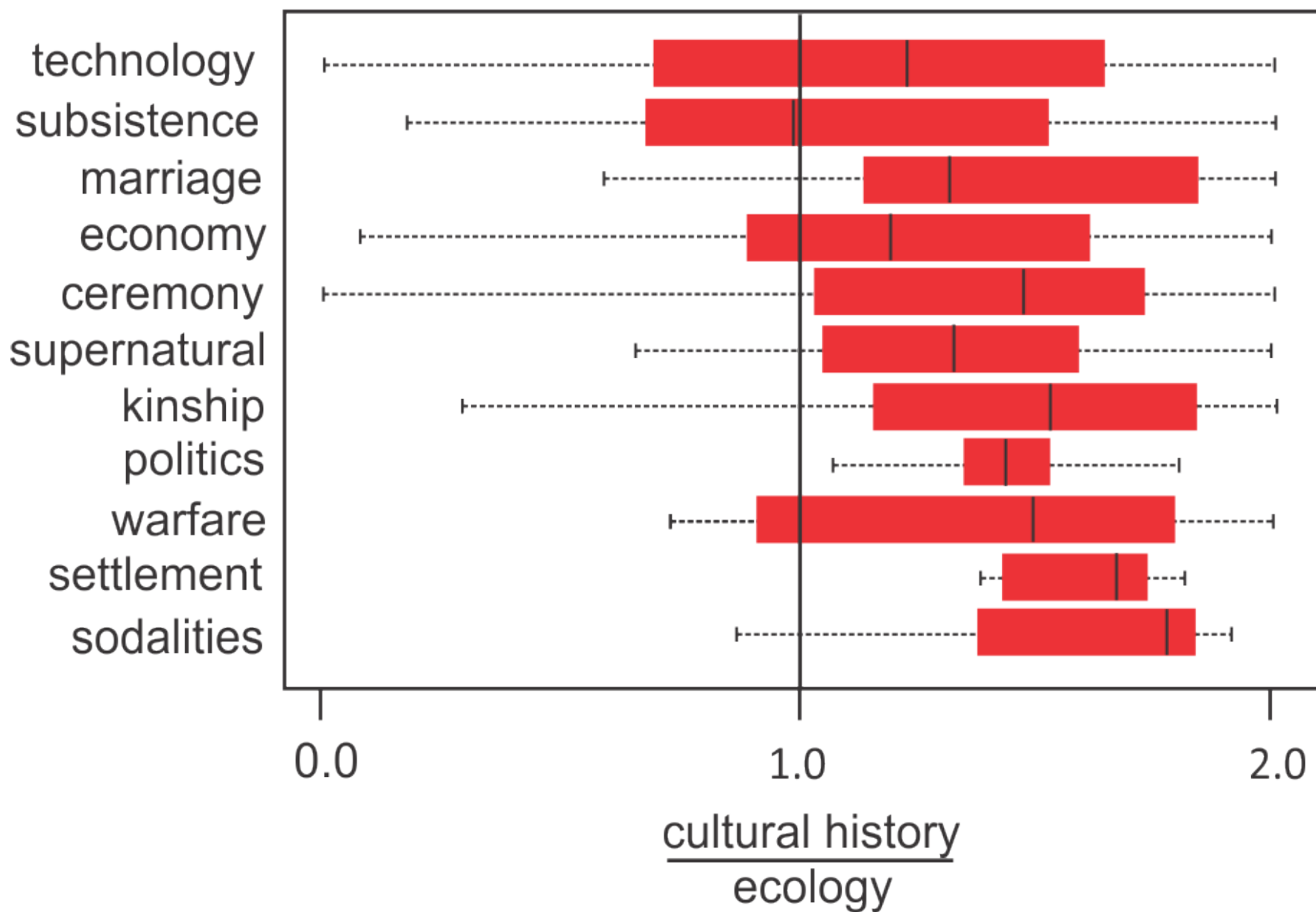
> **SPOTTEDBACKED WEAVER**
Suspended from bushes and trees over water. Spout may be longer or absent. Large colonies.











Time depth 8
(language)

Time depth 7

Time depth 6

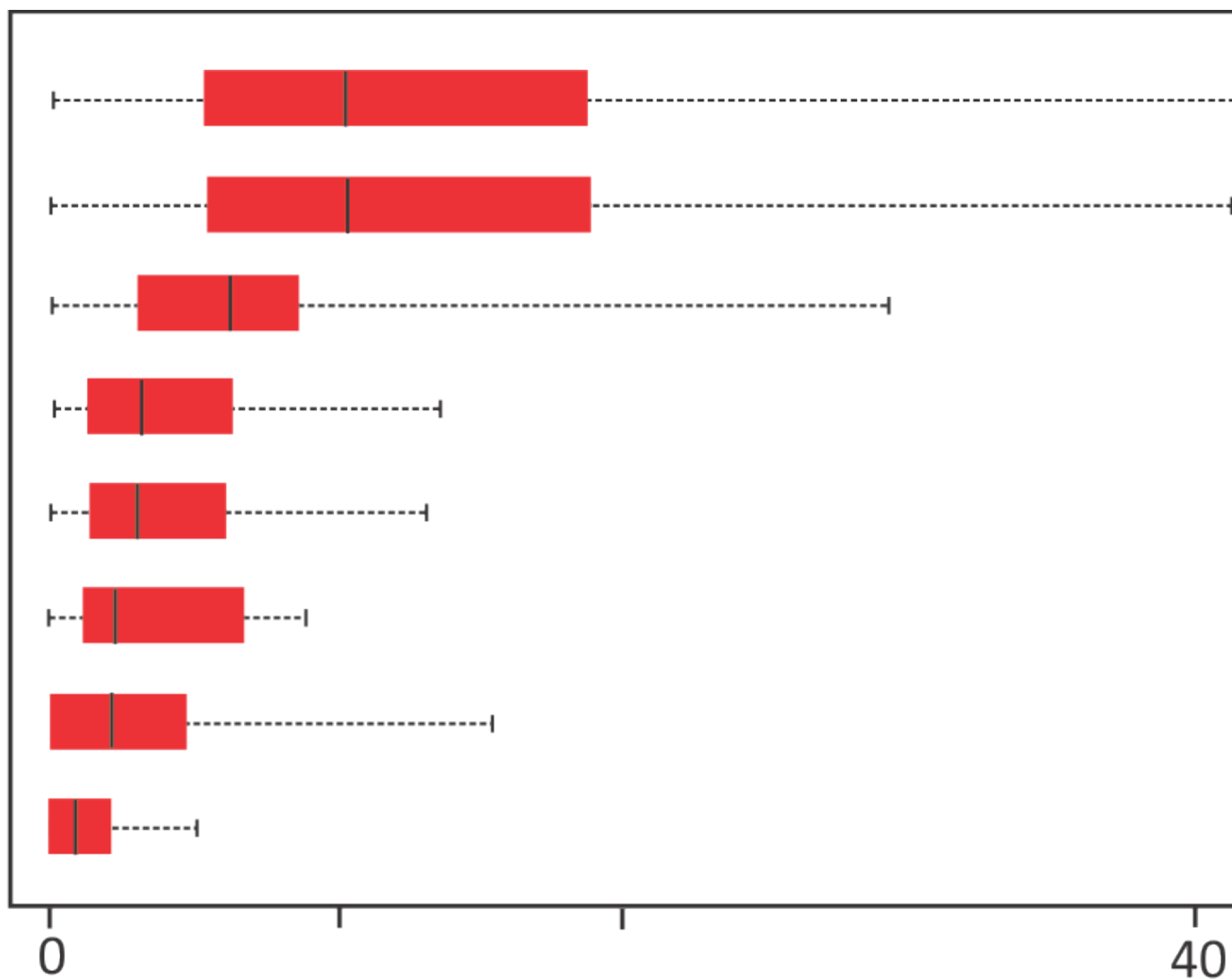
Time depth 5

Time depth 4

Time depth 3

Time depth 2

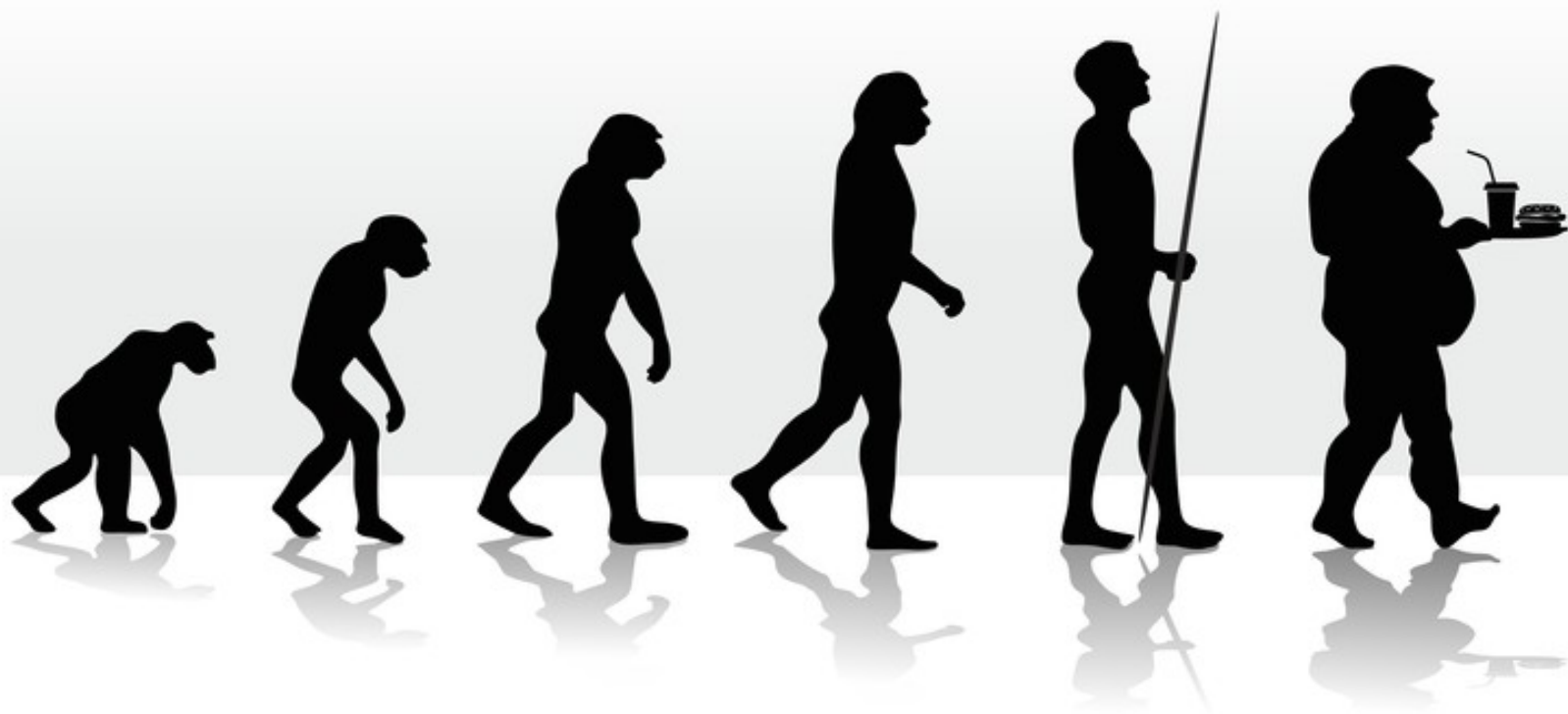
Time depth 1
(phylum)



Sum absolute value cultural
phylogenybeta coefficients

This changes everything







What about rodents?



Many habitats = many species



Many habitats = one species

